

Plug-In Voice Security for Motorola Radios

MOT-TVS-2 Series

High-Level Hopping Code Voice Scrambler

- 5 User-Programmable Levels of Security
- Uses Hopping Code Instead of Sweeping Code for Higher Security
- +40 Trillion Possible Codes
- Supports Over-The-Air-Reprogramming (OTAR), Radio Kill, Spy and more using Midian's Kryptic Signaling Format

MOT-VPU-15 Series

Voice Inversion Scrambler with Kryptic Signaling

- 4 User-Programmable Inversion Frequencies from a List of 37 Frequencies
- Supports Over-The-Air-Reprogramming (OTAR), Radio Kill, Spy and more using Midian's Kryptic Signaling Format

VS-110-Mxx

Rolling Double Inversion Voice Scrambler

- Programmable for up to 4 of 1020 codes (4 groups with 255 codes per group)
- Compatible with Icom's UT-110

VS-1000-Mxx

Voice Inversion Scrambler

- Programmable to any Inversion Frequency between 2100 and 4096 Hz

VS-1050-Mxx

Voice Inversion Scrambler with ANI

- Programmable to any Inversion Frequency between 2100 and 4096 Hz
- ANI and ENI in Motorola's MDC-1200, Kenwood's FleetSync, Harris' G-Star (aka GE-Star), DTMF or 5-Tone

VS-1100-Mxx

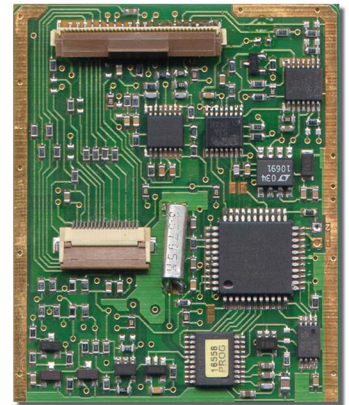
Double Inversion Voice Scrambler

- Programmable for up to 4 of any of the 32 splits
- Compatible with Midian's VPU-6, Icom's UT-109 or AIR's/Inysa's XPTO

VS-1200-Mxx

High Level Frequency Domain Voice Scrambler with ANI

- Total code combinations: $\sim 6.2 \times 10^{23}$
- Actual code combinations: ~ 4 billion
- Number of selectable keys: 3
- 3 user-programmable levels of security plus voice inversion
- Programmable audio levels
- ANI and ENI in Motorola's MDC-1200, Kenwood's FleetSync, Harris' G-Star (aka GE-Star), DTMF or 5-Tone



Shown: MOT-TVS-2-PRO



Shown: VS-1100-MT1



Plug-In Tone & Voice Modules for Motorola Radios

SVR-1-Mxx

Simplex Repeater Maker

- Store and forward up to 3 minutes of tone and voice
- Create a low-cost simplex vehicular repeater to increase portable radio coverage when the user is out of his or her vehicle
- Expand radio coverage into remote locations, tunnels, buildings, downtown areas & more

TS-120-Mxx

Multi-Format ANI & Emergency ANI Encoder

- ANI and ENI in Motorola's MDC-1200, Kenwood's FleetSync, Harris' G-Star (aka GE-Star), DTMF or 5-Tone
- Lone Worker and Man-Down features

VAE-1-Mxx

Voice Alarm Encoder with Multi-Format ANI

- Prerecord voice messages to be sent when an event occurs
- Lone Worker and Man-Down features
- Ideal for identifying user name and location or notifying users of equipment failures or when on backup power
- ANI and ENI in Motorola's MDC-1200, Kenwood's FleetSync, Harris' G-Star (aka GE-Star), DTMF or 5-Tone



Shown: TS-120-MPP1

VM-3-Mxx

Voice Storage Module

- Record up to 3 minutes of voice messages
- Users can play back and save voice messages using buttons on the radio

All products in this brochure are supported in the following Motorola Professional Series radios:

Portables: GP-140, GP-328, GP-328-LS, GP-329, GP-338, GP-338-LS, GP-339, GP-340, GP-360, GP-380, GP-640, GP-680, HT-750, HT-1250, HT-1250-LS+, MTX-850-LS, MTX-8250-LS, PR-860, PRO-5150, PRO-5350, PRO-5450, PRO-7150, PRO-7350, PRO-7450, PTX-700, PTX-760

Mobiles: CDM-750, CDM-1250, CDM-1550-LS+, GM-140, GM-160, GM-328, GM-338, GM-338-LS, GM-339, GM-340, GM-360, GM-380, GM-398, GM-399, GM-640, GM-660, GM-1280, MCX-720, MCX-760, MCX-780, PRO-3100, PRO-5100, PRO-7100, PRO-7200

All products in this brochure are supported in the following Motorola Commercial Series radios:

Portables: CP-160, CP-180, EP-450, GP-3688, PR-400

Mobiles: CM-160, CM-300, CM-360, EM-400, GM-3688, PM-400 (4-key version)

The TS-120-MT1, VS-1000-MT1, VS-1050-MT1, VS-1100-MT1 are supported in the following Motorola MOTOTRBO Series radios:

Portables: DGP-4150, DGP-6150, DP-3400, DP-3401, DP-3600, DP-3601, XiR-P8200, XiR-P8208, XiR-P8260, XiR-P8268, XPR-6300, XPR-6350, XPR-6500, XPR-6550

Mobiles: DGM-4100, DGM-6100, DM-3400, DM-3401, DM-3600, DM-3601, XiR-M8220, XiR-M8228, XiR-M8260, XiR-M8268, XPR-4300, XPR-4350, XPR-4500, XPR-4550

The TS-120-MT2, VS-1000-MT2, VS-1050-MT2, VS-1100-MT2 are in development for the second generation Motorola MOTOTRBO radios.