

MOTOROLA DIMETRA PARTNER APPLICATIONS CATALOGUE

WORLD CLASS PARTNERSHIPS HANDPICKED BY A WORLD LEADER IN CRITICAL COMMUNICATIONS



For more information on our Dimetra application partner programme, please visit us on the web at www.motorolasolutions.com/TETRA/applications



MOTOROLA, MOTO, MOTOROLA SOLUTIONS and the Stylized M Logo are trademarks or registered trademarks of Motorola Trademark Holdings, LLC and are used under license. All other trademarks are the property of their respective owners. © 2014 Motorola, Inc. All rights reserved. Specifications are subject to change without notice. All specifications shown are typical. Radio meets applicable regulatory requirements.

DIMETRA_APPLICATION_CATALOGUE_UK_(05/14)



CONTENTS

FIND THE APPLICATION AND MOTOROLA PARTNER TO MEET YOUR SPECIFIC NEEDS AND TAKE YOUR COMMUNICATIONS TO THE NEXT LEVEL. EASILY SEE WHAT EACH PARTNER CAN OFFER YOUR ORGANISATION TO ENSURE YOU GET THE MOST RELEVANT PACKAGE OF SUPPORT.

PAGE NO.	APPLICATION CATEGORY	APPLICATION NAME	SOLUTION PROVIDER
4 5	ALARM AND TELEMETRY MANAGEMENT	FOUR.C MOBILE	CELAB COMMUNICATIONS AB
6 7	ALARM AND TELEMETRY MANAGEMENT	TRIM	SYSTEL
8 9	ALARM AND TELEMETRY MANAGEMENT	CANVIEW APPLICATION SOLUTION	SYSTEL
10 11	ALARM AND TELEMETRY MANAGEMENT	ALARM CONTROL SYSTEM	ZONITH
12 13	ALARM AND TELEMETRY MANAGEMENT	REMOTE TELEMETRY AND CONTROL UNITS	ZONITH
14 15	ALARM AND TELEMETRY MANAGEMENT	OFFSHORE OIL & GAS ALARM MANAGEMENT AND STAFF SAFETY SOLUTION	ZONITH
16 17	APPLICATION DEVELOPMENT TOOLKITS	2WBUILDER IDE	SOFTWAREFX
18 19	BILLING AND PROVISIONING SOLUTIONS	GENESIS TRIO	GENESIS
20 21	COMPUTER AIDED DISPATCH	INTEGRATED DIGITAL DISPATCHER SYSTEM (IDDS)	EUROFUNK
22 23	COMPUTER AIDED DISPATCH	VISION COMMAND AND CONTROL	MOTOROLA WITH CAPITA
24 25	COMPUTER AIDED DISPATCH	IHM COM4500 TETRA CAD	IHM
26 27	COMPUTER AIDED DISPATCH	IHM TETRA CAD	IHM
28 29	CONTACT CENTRE PERFORMANCE MANAGEMENT	PERFORMANCE OPTIMISATION SOLUTION	SPESCOM
30 31	CUSTOM RADIO INTERFACE SOLUTIONS	IHM STATUS PANEL	IHM
32 33	CUSTOM RADIO INTERFACE SOLUTIONS	MIMER SOFTRADIO	LS ELEKTRONIK AB
34 35	CUSTOM RADIO INTERFACE SOLUTIONS	SSIC SMART SERIAL INTERFACE CABLE	SYSTEL
36 37	CUSTOM RADIO INTERFACE SOLUTIONS	TETRA INTERACTIVE DISPLAY (TID)	SYSTEL
38 39	CUSTOM RADIO INTERFACE SOLUTIONS	ZENIPOL FOR CUSTOMIZED MOTORCYCLE TWO-WAY RADIO INSTALLATIONS	ZENITEL
40 41	INTEROPERABILITY SOLUTIONS	ADEO COMMUNICATIONS MANAGEMENT	EUROCOM
42 43	INTEROPERABILITY SOLUTIONS	TETRA INTEGRATION ON ALPHACOM INTERCOM SYSTEMS	ZENITEL
44 45	LONE WORKER SAFETY	CENTRALISED LONE WORKER	ZONITH
46 47	PERSONNEL ALERTING AND PAGING SOLUTIONS	CALL OUT	MOTOROLA WITH CAPITA
48 49	PERSONNEL ALERTING AND PAGING SOLUTIONS	FIRE STATION TETRA CALL-OUT	ZONITH
50 51	RADIO DISPATCH SOLUTIONS	WIRED CONNECTED DISPATCH & TRACKING FOR LARGE SYSTEMS	KOLIBRI
52 53	RADIO DISPATCH SOLUTIONS	WIRELESS CONNECTED DISPATCH & TRACKING FOR SMALL SYSTEMS	KOLIBRI
54 55	RADIO DISPATCH SOLUTIONS	GEOGRAPHICAL DYNAMIC REGROUPING AND MONITORING SYSTEM	SYSTEL
56 57	RESOURCE AND ASSET TRACKING	GPS TRACKING OVER TETRA	BITEA
58 59	RESOURCE AND ASSET TRACKING	FLEET MANAGEMENT AND VEHICLE TRACKING	C-TRACK
60 61	RESOURCE AND ASSET TRACKING	PROFESSIONAL FLEET MANAGEMENT	HERMESTRX
62 63	RESOURCE AND ASSET TRACKING	ONLINE TRACKING SYSTEM	SERVITRON
64 65	RESOURCE AND ASSET TRACKING	INDOOR POSITIONING SYSTEM	ZONITH
66 67	RESOURCE AND ASSET TRACKING	OFFSHORE WIND FARM PERSONNEL TRACKING SOLUTION	ZONITH
68 69	SYSTEM MANAGEMENT AND MONITORING	GENWATCH3® NETVISTA	GENESIS
70 71	SYSTEM MANAGEMENT AND MONITORING	TETRA NETWORK ALIVE CHECK MODULE	ZONITH
72 73	VOICE RECORDING SYSTEMS	CYBERTECH VOICE RECORDING	MOTOROLA WITH CYBERTECH
74 75	VOICE RECORDING SYSTEMS	TRUNKED RADIO AND INCIDENT INFORMATION MANAGEMENT	MOTOROLA WITH NICE
76 77	VOICE RECORDING SYSTEMS	QUANTIFY RECORDING SUITE	RED BOX
78 79	VOICE RECORDING SYSTEMS	DATAVOICE	SPESCOM
80 81	VOICE RECORDING SYSTEMS	TETRA VOICE LOGGER AND ARCHIVING SYSTEM	SYSTEL
82 83	VOICE RECORDING SYSTEMS	AUDIOLOG	VERINT
84 85	WORFORCE MOBILITY SOLUTIONS	ADEO EMO MOBILE OFFICE	EUROCOM
86 87	WORFORCE MOBILITY SOLUTIONS	TETRA MULTI-BEARER COMPUTER	TETRATAB
88 89	WORFORCE MOBILITY SOLUTIONS	ZENICOPTER	ZENITEL



WORLD CLASS PARTNERS HAND PICKED BY A WORLD LEADER IN CRITICAL COMMUNICATIONS

TAKE YOUR NETWORK TO THE NEXT LEVEL

Benefit from solutions designed to fit your specific needs and strategies so you can be more productive, more efficient and more effective.

Communication networks are becoming increasingly important for all of us as we strive to manage and optimise our resources. It's no exaggeration to say the network is the hub for all communications, whether with clients, colleagues or the general public. Sometimes it's good to stop and consider how well you are communicating and how you can improve even further to maximise every opportunity.

That's where our partner programme comes in - a selection of world class technology specialists ready to maximise the power of your TETRA system and meet your challenging objectives. Wherever you want to go, these partners have the credentials and experience to help you get there. Hand-picked by Motorola, all have the skills and technological scope to deliver integrated solutions tailored to your needs.

TRUE SPECIALISTS

Choose from a wide range of companies specialising in applications such as fixed control room and location tracking, network management, wireless command and control or alarm and telemetry. All our partners will help you develop your network, providing advice and then implementing solutions featuring the very latest network innovations. It's an efficient way to put your communications right on the leading edge and boost performance.

WORLD'S BEST PARTNERS

Be assured you'll be working with companies that are pioneers in their field. World class organisations that share with Motorola a commitment to provide the most effective communications possible. All are highly qualified to industry-leading standards and meet our stringent requirements for technical ability, staff expertise and operational support. Most have a global presence and can work with you in multiple languages.

THE LOGICAL NEXT STEP

Keeping pace with technology is one of the most important attributes of a successful operation. Choose one of our approved Motorola partners and see how you can take your TETRA network to the next level*.

A SMOOTH-RUNNING TETRA NETWORK IS JUST THE START OF A SUCCESSFUL OPERATION. SELECT A MOTOROLA PARTNER AND YOU'LL GET WORLD CLASS EXPERTISE AND SUPPORT TO TAKE YOUR COMMUNICATIONS TO THE NEXT LEVEL.

* Unless specified, Motorola is not responsible for any product or information from an application partner. For more information on any of the partner companies featured in this guide, please contact the application partner directly.

FOUR.C MOBILE CELAB COMMUNICATIONS AB

OVERVIEW

Four.C Mobile (Celab Command and Control Center) enhances resource management by combining mobile job and alarm management, status reporting, and navigation in a user-friendly touch screen solution.



CELAB COMMUNICATIONS AB

Target Markets
Police, Ambulance, Fire Brigade, Transport and Delivery, Banks, Supermarkets or any organisation requiring an alarm or serial data capture system within TETRA coverage.

Geographical Scope
EMEA (Europe, Middle East and Africa)

Supported Languages
English and Arabic



KEY FEATURES

- Touch screen 7 inch platform
- Memory Card reader and Cradle with suction mount
- Allows forwarding of incoming tickets or alarms
- Up to 16 destinations can be set and geographically locked (Geofencing)
- Configurable buttons for name, destination and working range
- Custom Icons can easily be created and installed by the user organisation
- Updates can be completed without a cable, connection, or computer through memory card or over-the-air via TETRA
- All activity can be logged onto a USB
- Supports reversing cameras which can be displayed on a second screen
- Proven technology within Fire Departments

SYSTEM REQUIREMENTS

Supported on Dimetra IP Compact and Dimetra IP Micro on all supported system releases.

“FOR 35 YEARS WE HAVE DELIVERED CUSTOMISED SOLUTIONS FOR CRITICAL COMMUNICATIONS, BASED ON THE LATEST TECHNOLOGY FROM PROVEN MANUFACTURERS.”



Celab Communications AB
Rollsbövägen 20
S-442 40 Kungälv
Sweden
+46 303 246000

Celab
COMMUNICATIONS AB

TRIM™ - CONTROL, MONITOR AND DATA CAPTURE SYSTEM SYSTEL

OVERVIEW

Systel TRIM is the first stand-alone module capable of interfacing Motorola TETRA radios with external environments, digital I/Os and serial data communications. An effective control monitoring and data capture solution that's fast and reliable.



SYSTEL

Target Markets
Police, Ambulance, Fire Brigade, Transport and Delivery, Banks, Supermarkets or any organisation requiring an alarm or serial data capture system within TETRA coverage.

Geographical Scope
EMEA (Europe, Middle East and Africa)

Supported Languages
English and Arabic



KEY FEATURES

- Compact, weather-resistant box (9cm X 6cm X 3cm)
- Supports up to 256 alarm and control (input/output) dry contacts
- All I/Os can be configured as N.O. (Normally Opened) or N.C. (Normally Closed) switches
- Alarm messages can be sent several times and to several destinations
- All configurations can be done over the air (OTA) via remote programming
- Three LEDs provide visual information on the status of the TRIM
- All alarms are stored in a database for historical purposes
- Location of alarms shown on a building plan or Google Earth
- Alarms must be acknowledged by user sending a confirmation to the TRIM box – shows time difference between received alarm and acknowledgment

SYSTEM REQUIREMENTS

Requires TETRA network coverage, portable or mobile radio and TRIM box.
Radio Requirements of Systel TRIM systems – applicable for all Motorola TETRA radios. Compatible with Dimetra IP Scalable.

“AS A LEADING PROVIDER OF MISSION AND BUSINESS CRITICAL INFORMATION AND COMMUNICATION SOLUTIONS, WE HAVE THE EXPERIENCE AND EXPERTISE TO DELIVER LEVELS OF NETWORK SECURITY AND RESILIENCE THAT HAVE ONLY BEEN AVAILABLE TO LARGE GOVERNMENT CUSTOMERS”



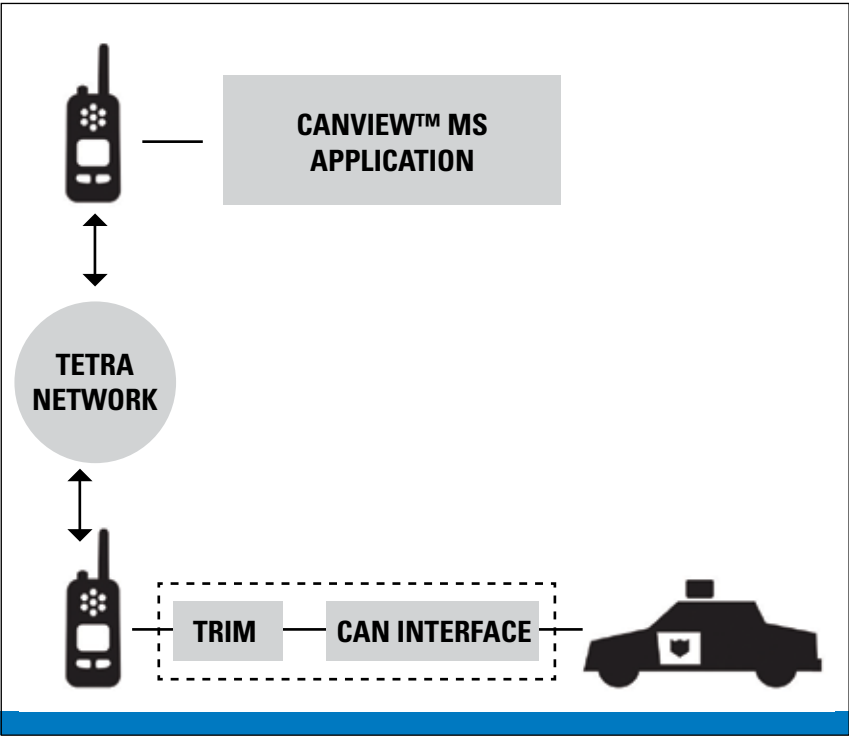
Systel
2A Shafik Mansour St. , Zamalek
Cairo - EGYPT
Yasser.Swailem@systel.com.eg
+202-27351222
+202-27355556
+202-27355252
www.systel.com.eg



CANVIEW APPLICATION SOLUTION SYSTEL

OVERVIEW

Systel CANView Application is a solution for the remote diagnostic, tracking and monitoring of vehicles using a TETRA radio. An easy way to monitor and control vehicles remotely from anywhere.



Target Markets
Police, Fire, Auto Transportation Companies, Oil and Gas Companies and Money Transfer Companies.

Geographical Scope
Europe, MEA

Supported Languages
English and Arabic



KEY FEATURES

Radio Requirements of Systel CANView Application – applicable for Motorola MTM800, MTM800E and MTM5400 TETRA radios.

- Retrieves data, location and alarms from the car computer
- Graphically displays data in the application software
- Allows tracking and monitoring of the vehicle through Google Earth maps
- Enables in vehicle and remote monitoring

SYSTEM REQUIREMENTS

Requires TETRA network coverage, portable and mobile radios and Controller Area Network (CAN) car bus interface. Compatible with Dimetra IP Scalable.

“AS A LEADING PROVIDER OF MISSION AND BUSINESS CRITICAL INFORMATION AND COMMUNICATION SOLUTIONS, WE HAVE THE EXPERIENCE AND EXPERTISE TO DELIVER LEVELS OF NETWORK SECURITY AND RESILIENCE THAT HAVE ONLY BEEN AVAILABLE TO LARGE GOVERNMENT CUSTOMERS”



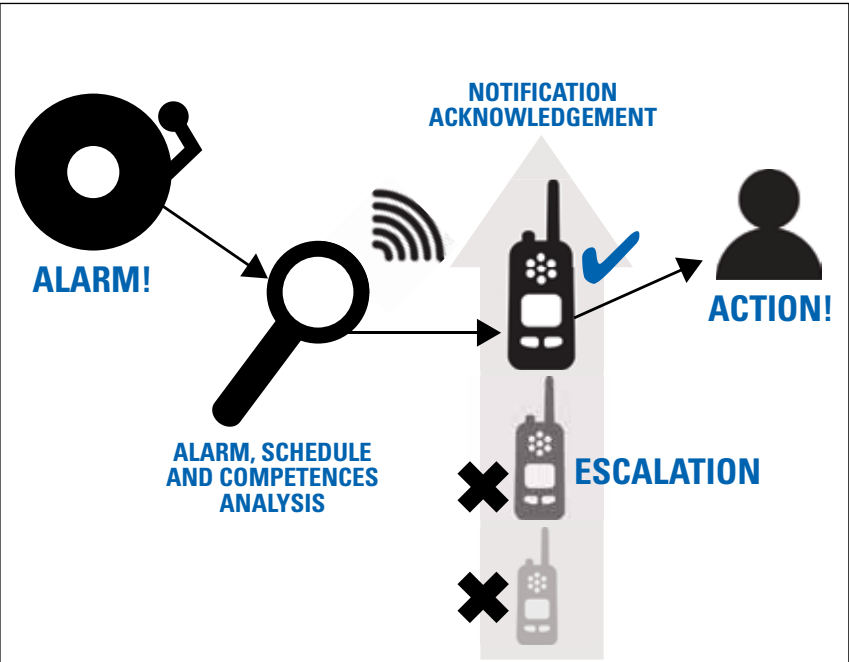
Systel
2A Shafik Mansour St. , Zamalek
Cairo - EGYPT
Yasser.Swailem@systel.com.eg
+202-27351222
+202-27355556
+202-27355252
www.systel.com.eg



ALARM CONTROL SYSTEM (ACS) ZONITH

OVERVIEW

ZONITH ACS is a Windows-based software application that intelligently and automatically dispatches emergency and business critical alarms to TETRA radios - an essential alarm control system for monitoring worker safety.



Target Markets
Public Safety, Oil & Gas, Power Utilities, Heavy Industry, Retail, Security

Geographical Scope
Europe, Asia, North America, Latin America and Australia

Supported Languages
English



KEY FEATURES

- Instant notification about critical alarms
- Receive, read and manage alarms or tasks on the go
- Automatically selects responders based on their availability, location and skill set
- Fully automated to improve the way people work and manage their time
- Automatically escalates alarm messages until a positive response is returned – alarms are initially sent to primary responders and then to back-up responders until action is taken
- Dispatches alarm messages to digital radios, mobile phones, paging devices or e-mail clients

SYSTEM REQUIREMENTS

The ZONITH ACS is entirely Windows-based and requires a Windows PC, TETRA radio, data cable and alarm systems interface.

Radio Requirements of the ZONITH Alarm Control System – applicable for all TETRA two-way radios.

“FOUNDED IN 2000 BY A GROUP OF NOKIA ENGINEERS, ZONITH A/S DEVELOPS SOFTWARE THAT MAKES LIFE EASIER FOR PROFESSIONALS WHO HAVE TO DEAL WITH ALARMS. WE SPECIALIZE IN ALARM HANDLING AND NOTIFICATION SOLUTIONS, SOLVING TASKS AT ALL LEVELS OF COMPLEXITY, RANGING FROM SIMPLE NOTIFICATION SOLUTIONS TO LARGE ALARM HANDLING SYSTEMS. ZONITH PROVIDES VALUE ADDED SOFTWARE APPLICATIONS THAT MAXIMISE THE BENEFITS OF TETRA TO IMPROVE THE SAFETY, SECURITY AND SITUATIONAL AWARENESS OF PUBLIC AND PRIVATE SECTOR EMPLOYEES.”

ZONITH A/S
Gammel Kongevej 39E
DK-1610 Copenhagen V
Denmark
www.zonith.com

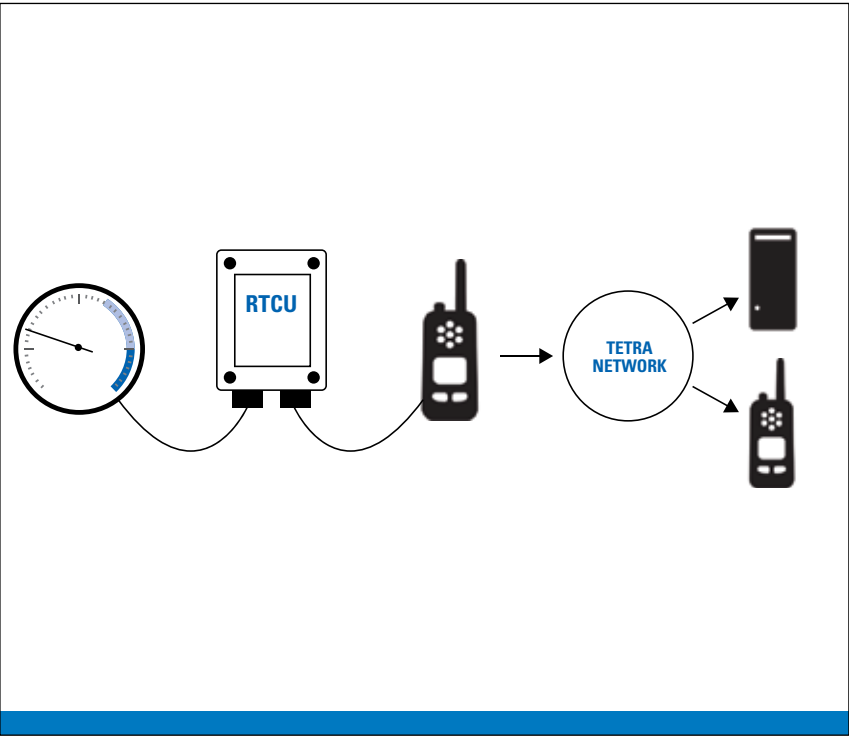
ZONITH UK LTD.
Sheraton House
Cambridge CB3 0AX
United Kingdom
www.zonith.com



REMOTE TELEMETRY & CONTROL UNIT (RTCU) ZONITH

OVERVIEW

ZONITH RTCU is a small remote telemetry and control unit that communicates using a connected TETRA radio or the built-in GSM modem. An easy and effective solution that monitors threshold levels for a more efficient workplace.



Target Markets
Public Safety, Oil & Gas, Power Utilities, Heavy Industry, Security, Environment Monitoring, Pharmaceuticals and Energy Generation

Geographical Scope
Europe, Asia, North America, Latin America and Australia

Supported Languages
English



KEY FEATURES

- Integrates seamlessly with Motorola Call-Out, enabling the transmission of high priority SDS messages between the RTCU and radio users
- Easy installation via input and output signals
- Communicates using a connected TETRA radio or via built-in GSM modem
- Monitor and control from TETRA radios or mobile phones on the ground
- Monitor and control from a control room computer
- Output signals and relays can be activated by sending an SDS or SMS text message back to the unit from a radio or control room software application
- Remotely control lights, gates, sound systems and other technical installations directly from a handset
- Fully certified to IP67 for proven operation in harsh environments
- Self monitoring 'heart beat' feature highlights any maintenance needs or communication failures
- GSM communication fail-over if TETRA communication is down

SYSTEM REQUIREMENTS

The ZONITH RTCU works on TETRA networks and requires a Windows-based computer for software installation.

Radio Requirements of the ZONITH RTCU – applicable for all TETRA radios and networks. Transmission and reception of high priority messages requires Motorola Call-Out software license.

“FOUNDED IN 2000 BY A GROUP OF NOKIA ENGINEERS, ZONITH A/S DEVELOPS SOFTWARE THAT MAKES LIFE EASIER FOR PROFESSIONALS WHO HAVE TO DEAL WITH ALARMS. WE SPECIALIZE IN ALARM HANDLING AND NOTIFICATION SOLUTIONS, SOLVING TASKS AT ALL LEVELS OF COMPLEXITY, RANGING FROM SIMPLE NOTIFICATION SOLUTIONS TO LARGE ALARM HANDLING SYSTEMS. ZONITH PROVIDES VALUE ADDED SOFTWARE APPLICATIONS THAT MAXIMISE THE BENEFITS OF TETRA TO IMPROVE THE SAFETY, SECURITY AND SITUATIONAL AWARENESS OF PUBLIC AND PRIVATE SECTOR EMPLOYEES.”

ZONITH A/S
Gammel Kongevej 39E
DK-1610 Copenhagen V
Denmark
www.zonith.com

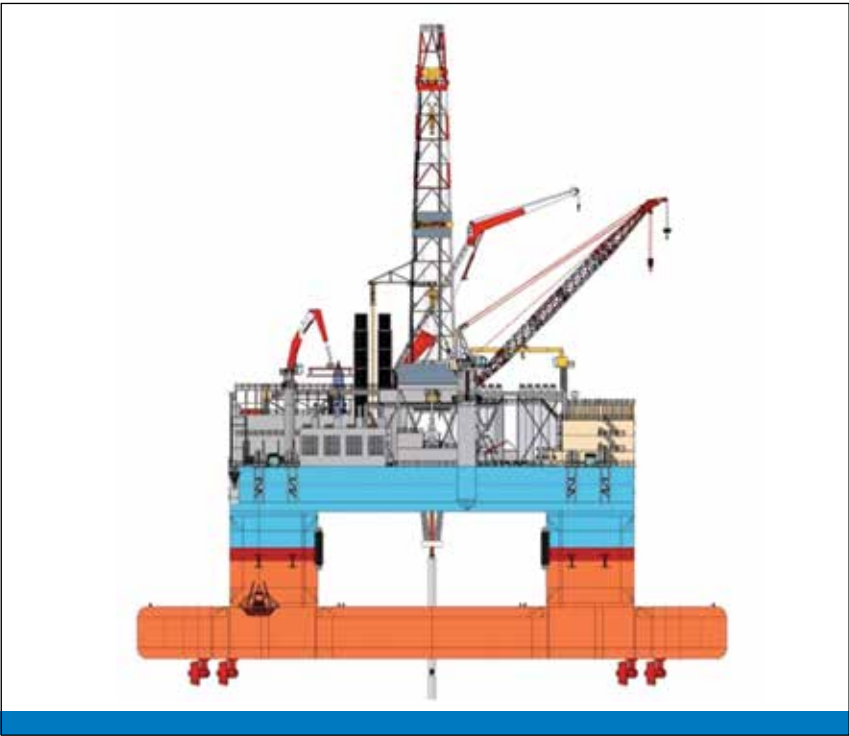
ZONITH UK LTD.
Sheraton House
Cambridge CB3 0AX
United Kingdom
www.zonith.com



OFFSHORE OIL & GAS ALARM MANAGEMENT AND STAFF SAFETY SOLUTION ZONITH

OVERVIEW

ZONITH Offshore Oil & Gas Alarm Management and Staff Safety Solution is a critical alarm monitoring system for offshore rigs. An effective way of quickly identifying and resolving faults to avoid downtime and potentially dangerous situations.



Target Markets
Offshore Oil & Gas and Petrochemical industry

Geographical Scope
Europe, Asia, Latin America, Australia, Canada and Greenland

Supported Languages
English



KEY FEATURES

Radio Requirements of the ZONITH Offshore Oil & Gas Alarm Management and Staff Safety Solution – applicable for all TETRA radios with displays (ATEX and Non-ATEX).

- TETRA alarm paging via SDS from fire alarm systems, rig control networks (RCN), drill control networks (DCN) and the general alarm (GA) system
- Interfacing to distributed alarm systems via OPC, ESPA4.4.4 or SNMP
- Low power emergency shutdown via TETRA radios
- Lone-worker protection using SDS messaging on TETRA radios
- TETRA network alive check

SYSTEM REQUIREMENTS

Interfaces to Dimetra via a Direct Short Data Router interface and Mobile TETRA radio PEI interface. The solution is entirely Windows based and requires a Windows Server and interfacing hardware.

“FOUNDED IN 2000 BY A GROUP OF NOKIA ENGINEERS, ZONITH DEVELOPS SOFTWARE THAT MAKES LIFE EASIER FOR PROFESSIONALS WHO HAVE TO DEAL WITH ALARMS AND STAFF SAFETY. ZONITH SPECIALIZES IN ALARM HANDLING AND NOTIFICATION SOLUTIONS, SOLVING TASKS AT ALL LEVELS OF COMPLEXITY, RANGING FROM SIMPLE NOTIFICATION SOLUTIONS TO LARGE ALARM HANDLING SYSTEMS. ZONITH PROVIDES VALUE ADDED SOFTWARE APPLICATIONS THAT MAXIMISE THE BENEFITS OF TETRA TO IMPROVE THE SAFETY, SECURITY AND SITUATIONAL AWARENESS OF PUBLIC AND PRIVATE SECTOR EMPLOYEES.”

ZONITH A/S
Gammel Kongevej 39E
DK-1610 Copenhagen V
Denmark
www.zonith.com

ZONITH UK LTD.
Sheraton House
Cambridge CB3 0AX
United Kingdom
www.zonith.com



2WBUILDER INTEGRATED DEVELOPMENT ENVIRONMENT SOFTWARE FX

OVERVIEW

Software FX 2WBuilder is an Integrated Development Environment providing all the tools required to fast-track TETRA applications. A comprehensive solution that helps organisations use WAP to easily design and deploy database driven applications for TETRA radio terminals.



SOFTWARE FX

Target Markets
Government and Enterprise, Utilities, Security, Fleet Dispatching, Work Order Management, Public Transportation, Taxi Companies, Emergency and Rescue, Security, Hospitality, Facility Management and Logistics.

Geographical Scope
Europe, Asia and Latin America

Supported Languages
English

SoftwareFX



KEY FEATURES

- **Enterprise Data Connectivity** - leverages WAP support to allow your terminals in the field to connect and interact with any RDBMS (Relational Database Management System) data source behind your corporate firewall
- **Easy Installation** - requires no hardware changes or software updates to your TETRA radio network and supports even the most complex behind-the-firewall IT and database infrastructures
- **FlowChart Designer** - provides an IDE based on a flowchart UI that avoids the complexity of WAP development
- **Fully Featured Development Environment** - incorporates all components necessary for the development, error checking, debugging and publishing of your applications
- **Extensible Architecture** - integrates additional functions such as GPS, Presence and e-Mail to help you design and deploy richer data applications

SYSTEM REQUIREMENTS

- For the Server:**
- An Application Server with Windows 2003/2008, IIS 6 or above, .Net Framework 2 or above
- For the IDE:**
- Windows XP, Vista or Windows 7
 - .Net Framework 2.0 or above
- For the Terminals:**
- Any WAP-enabled TETRA radios with digital display
 - WAP-enabled TETRA network

“BY PROVIDING TOP-OF-THE-LINE PRODUCTS FOR DIFFERENT TECHNOLOGY PLATFORMS, WE CONTINUE TO LEAD THE MARKET IN DEPLOYING GRAPHIC DEVELOPMENT TOOLS. SOFTWARE FX IS COMMITTED TO PROVIDING A RICH SET OF TOOLS AND SUPPORT FOR PAST, PRESENT AND FUTURE TECHNOLOGIES”

Software FX
951 Yamato Rd.Suite 101Boca
Raton, FL 33431 USA
www.softwarefx.com

SoftwareFX



GENWATCH3® TRIO™ BILLING & PROVISIONING SOLUTION GENESIS GROUP

OVERVIEW

The Genesis Group GenWatch3® Trio™ is a Windows® based Customer Care and Billing solution. It is designed to help manage and bill thousands of accounts associated with the SMARTZONE, ASTRO® and Dimetra trunking systems.

KEY BENEFITS

Precise provisioning and management of inventory, accounting, billing and client care are hallmarks of a strong business. Genesis Trio is designed to work specifically with Dimetra and ASTRO® systems, assembling individual usage details such as telephone, group call and private call to generate accurate billing according to the rules you set. In-depth reports provide detailed metrics for market and traffic analysis.

Complete Billing Solution

Takes total control of your billing by enabling you to go from contract to invoice for Dimetra and SMARTZONE wireless communication systems.

Easy to Use

Simple to set up and use - activate, deactivate and change user features in the System Controller from your GUI screen.

All Your Company information in One Place

Stores and utilises a wealth of data to more efficiently manage your customers and radio systems. Multiple companies can be accessed from one installation of Trio. Trio records Company Name, Address, Phone, Email, Shipping Info, Customer Care contacts and Billing Options by company. Define open/close accounting periods manually or automatically.

Target Markets

Public Safety, Police, Ambulance, Fire, Utility Companies

Geographical Scope

Europe, Asia, North America, Latin America, Australia & New Zealand

Supported Languages

English and Spanish (Reports can be presented in any language that is supported by MS Excel®)



KEY FEATURES

- Set up Churn codes to define why radio units are activated or deactivated and set up billing frequencies and cycles for use during invoicing
- Access to all customer care information from one screen
- Store multiple billing and shipping addresses per customer and set default address and options for each (invoice detail, language, frequency etc)
- View and manage discount and recurring charges assigned to a customer - lists all transactions posted to an account and displays the total balance
- Basic Commissioning & Inventory module stores information about each individual inventory item
- Invoice customers on a monthly, quarterly, semi-annual or annual basis and create one-time invoices for non-recurring charges
- Fixed Fee Calculation - Allows automatic pro-rating of normal monthly fees
- Interface to Client Master Accounting System supplier or VAR
- Utilises SAP Crystal Reports as the basis for billing to create professional invoices complete with logos and comments

SYSTEM REQUIREMENTS

Requires a LAN connection to the Zone Controller. It is supported on Dimetra IP, Dimetra IP Micro and Dimetra IP Compact.
No specific TETRA radio requirements.

“THROUGH OUR STATE-OF-THE-ART SOFTWARE, WE PROVIDE THE TOOLS TO MAXIMISE THE CAPABILITIES OF COMMUNICATION SYSTEMS. FLEXIBLE, MULTI-FEATURED AND MODULAR, GENESIS SOLUTIONS ARE THE INDUSTRY STANDARD IN PERFORMANCE MANAGEMENT SOFTWARE. THEY ARE THE MOST EFFECTIVE WAY TO COMPREHENSIVELY MONITOR, MANAGE, DISPLAY, ARCHIVE AND REPORT ON COMMUNICATION SYSTEM DATA”.



GENESIS.
601 Shelley Drive, Suite 202
Tyler, Texas, 75701
www.genesisworld.com



INTEGRATED DIGITAL DISPATCHER SYSTEM (IDDS) EUROFUNK

OVERVIEW

The Integrated Digital Dispatcher System (IDDS) is a touch screen operated digital communications and dispatch platform for use with Computer-aided Incident management, incident dispatching and relevant documentation.



Target Markets
Police, Fire, Ambulance, Airports, Industrial, Petrochemical

Geographical Scope
Europe, Middle East and Africa

Supported Languages
English, German, Dutch, Arabic



KEY FEATURES

- Touch screen platform
- Individual dispatcher log-in
- Specified role-based rights and performance authorities
- Proven technology with over 1000 operators in use
- Trans-regional cooperation through geographically redundant IP connections
- Optional use of redundant servers on different locations for high availability and fault tolerance

SYSTEM REQUIREMENTS

Supported on Dimetra IP Scalable on System Releases 7.1 and 8.1.

Requires Microsoft Windows Operating System; Industry Standard hardware; and Database Licensing (3rd Party or Open)

Radio Requirements of IDDS – applicable for all Motorola TETRA radios.

“EUROFUNK PROVIDES SCALABLE CONTROL ROOM SOLUTIONS FOR DISPATCHING, INCIDENT MANAGEMENT, MAP BASED TRACKING AND TELEPHONY. CUSTOMISED INTEGRATION WITH PA, INTERCOM OR CCTV GUARANTEES A HIGH SITUATIONAL AWARENESS IN MISSION CRITICAL ENVIRONMENTS. EUROFUNK’S 45 YEAR EXPERIENCE AND EXPERTISE DELIVER HIGH LEVELS OF NETWORK SECURITY AND RESILIENCE TO BOTH INDUSTRY AND GOVERNMENT SECTORS. CREATING SAFETY BY TECHNOLOGY.”



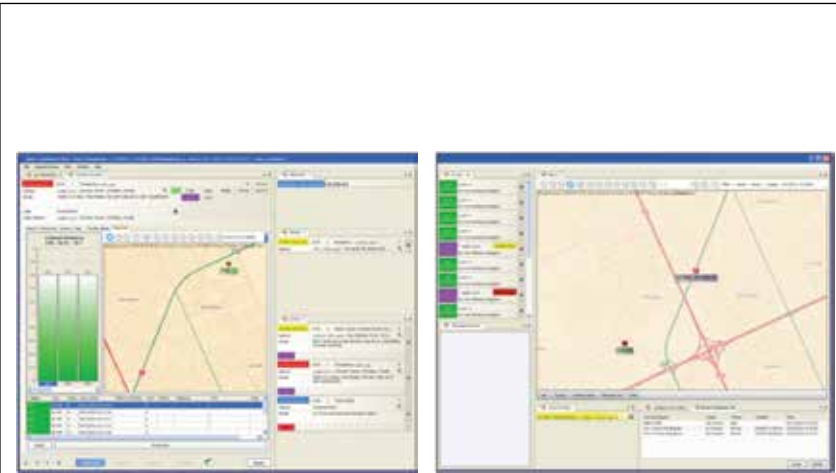
EUROFUNK KAPPACHER GMBH
Eurofunk-Straße 1-6
5600 St. Johann im Pongau
Salzburg
Austria



M-VISION COMMAND, CONTROL AND COMMUNICATIONS SYSTEM MOTOROLA WITH CAPITA

OVERVIEW

Provided by Motorola in partnership with Capita, the M-VISION Command, Control and Communications system supports and enhances the operational activities in an Emergency Services Agency control room and out in the field. A comprehensive tool delivered through a single operator workstation for efficient incident management.



CAPITA

- Target Markets**
Police, Fire, Ambulance, Coastguard and multi-agency Emergency Service Agencies
- Geographical Scope**
Europe, Asia and Australia
- Supported Languages**
English and Arabic

CAPITA



KEY FEATURES

- Supports and enhances all the operational activities in an Emergency Services Agency Control Room and in the field
- Manages the core tasks of communications, call taking, resource deployment and incident management
- Utilises latest developments in IT including Voice over IP, VoIP, Computer Telephony Integration, CTI and Spatial Analysis and Databases
- Highly configurable design allows each agency to define a set of business rules for call scripts, initial response and associated action plans for each scenario
- Can be configured to operate with any combination of workstation clients
- Full workstation client uses a Window Geographical User Interface (GUI) for use in control rooms where speed and accuracy of response and integration of communications are essential
- Extended web client for users outside the control room allows monitoring of incident and resource activity or registering/updating of incident status
- Deploy as a standalone or complete end-to-end solution
- Each system can be seamlessly integrated to provide a truly sophisticated Computer Aided Dispatch solution

SYSTEM REQUIREMENTS

- Microsoft Windows .NET Environment and Operating Systems
- Industry Standard Hardware
- Third Party Database Licensing
- Third Party Routing and Mapping Data

Radio Requirements of Capita M-VISION Command, Control and Communications Solutions – all Motorola radios.

“CAPITA’S SECURE INFORMATION SOLUTIONS BUSINESS IS THE SUPPLIER OF TECHNOLOGY-DRIVEN EFFECTIVENESS AND EFFICIENCY TO PUBLIC SECTOR ORGANISATIONS. WORKING WITH CENTRAL AND LOCAL GOVERNMENT, PUBLIC SAFETY AND JUSTICE AGENCIES AND THIRD SECTOR ORGANISATIONS, ITS MISSION IS TO HELP ITS CUSTOMERS INTELLIGENTLY MAXIMISE THE USE OF ASSETS AND RESOURCES TO ACHIEVE OPTIMAL OPERATIONAL EFFICIENCY.”

Contact your local Motorola representative for further details.

CAPITA



IHM COM4500 TETRA CAD IHM

OVERVIEW

The IHM COM4500 TETRA CAD provides gateway connection between the MOTOROLA ICCS and operator positions. These are configured for IP and can therefore be placed local or remote from the central switching equipment.



Target Markets
Public safety control rooms

Geographical Scope
Europe

Supported Languages
All languages supported by application



KEY FEATURES

Radio Requirements of the IHM COM4500 TETRA CAD – applicable for all TETRA radios and networks with Dimetra IP System Release 7.1, Dimetra IP Compact or Scalable Dimetra Release 4.1 or Dimetra IP Micro/Dimetra LiTE Release 2.0.

- Proven technology with more than 100 positions installed
- Supports MOTOROLA CORBA, CADI, SDS ROUTER
- Supports fall back communication using IHM FWT (Fixed Wireless Terminal providing an over-the-air TETRA connection)

SYSTEM REQUIREMENTS

The gateway and software requires MOTOROLA ICCS, optional PBX (analogue/ISDN or VoIP), IHM FWT, POCSAG transmitter and Legacy Radio base stations.

“IHM P/S WAS FOUNDED IN 1981 UNDER THE NAME INGENIOERFIRMAET H. MORTENSEN A/S. THE NAME OF THE COMPANY WAS CHANGED TO THE SHORTER AND MORE INTERNATIONAL NAME IHM P/S IN OCTOBER 2011 - IN CONNECTION WITH GLOBAL VENTURE WHERE WE SEEK NEW CHALLENGES AND OPPORTUNITIES IN MARKETS ALL OVER THE GLOBE. IHM IS ONE OF DENMARK’S LEADING MANUFACTURERS OF SOLUTIONS AND EQUIPMENT FOR TELE- AND RADIO COMMUNICATIONS. WE ARE BASED IN THE DANISH CAPITAL, COPENHAGEN.”

IHM
IHM P/S
Vandtaarnsvej 87
2860 Soeborg
Denmark

 **Mission Critical Communication Solutions**

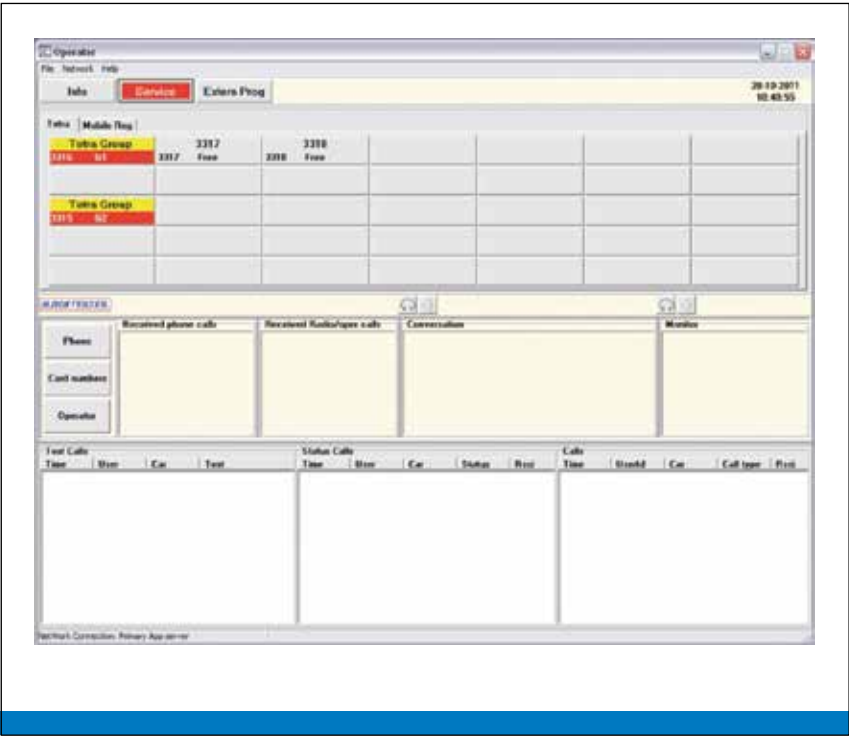
Phone: +45 39 66 31 31
Email: info@ihm.dk
Web: www.ihm.dk

IHM TETRA CAD

IHM

OVERVIEW

The IHM TETRA CAD is an application for public safety control rooms that makes computer aided dispatch easier than ever. Seen from a user perspective, it replaces the MCC7500 GUI, expanding services to status call and text messaging.



Target Markets
Public safety control rooms

Geographical Scope
Europe

Supported Languages
All languages supported by application



KEY FEATURES

Radio Requirements of the IHM TETRA CAD – applicable for MCC7500 TETRA radios with Dimetra IP System Release 7.1, Dimetra IP Compact or Scalable Dimetra Release 4.1 or Dimetra IP Micro/Dimetra LiTE Release 2.0.

- Proven technology with more than 100 positions installed
- Mutual status messages on all operator terminals
- Mutual Call queue on all operator terminals
- Mutual SDS message call queue on all operator terminals

SYSTEM REQUIREMENTS

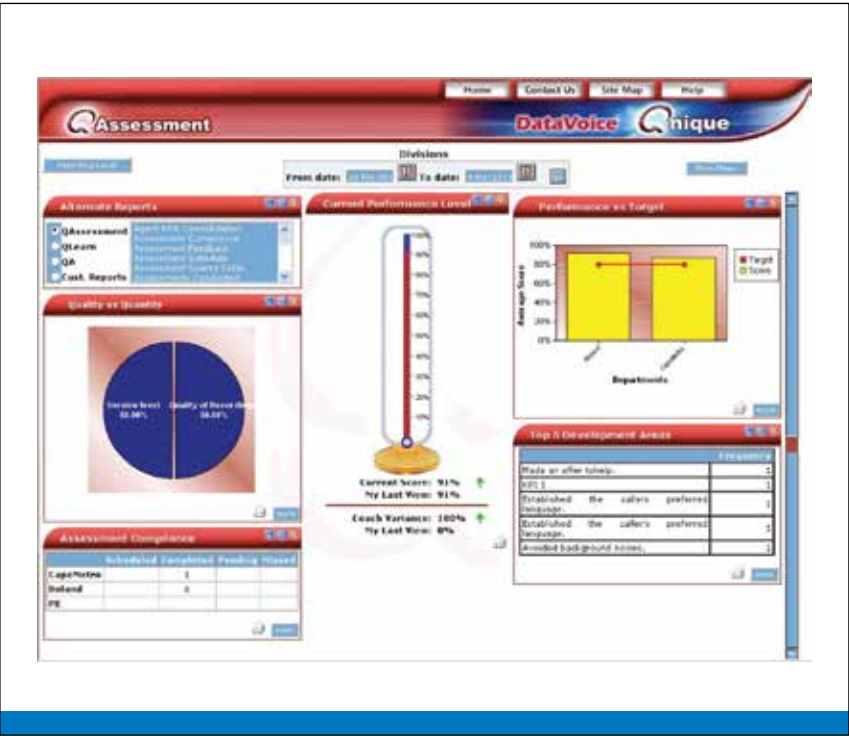
The software requires a MOTOROLA MCC7500 radio dispatcher and a common Windows server.

“IHM P/S WAS FOUNDED IN 1981 UNDER THE NAME INGENIOERFIRMAET H. MORTENSEN A/S. THE NAME OF THE COMPANY WAS CHANGED TO THE SHORTER AND MORE INTERNATIONAL NAME IHM P/S IN OCTOBER 2011 - IN CONNECTION WITH GLOBAL VENTURE WHERE WE SEEK NEW CHALLENGES AND OPPORTUNITIES IN MARKETS ALL OVER THE GLOBE. IHM IS ONE OF DENMARK’S LEADING MANUFACTURERS OF SOLUTIONS AND EQUIPMENT FOR TELE- AND RADIO COMMUNICATIONS. WE ARE BASED IN THE DANISH CAPITAL, COPENHAGEN.”

FULLY INTEGRATED PERFORMANCE OPTIMISATION SOLUTION SPESCOM

OVERVIEW

The Spescom DataVoice Unique Performance Optimisation Solution delivers 360° optimisation for performance-critical organisations. A unified system, it provides contact centre staff key performance metrics and optimisation criteria tailored to any workflow need.



Target Markets
Police, Fire, Rail, Defence, Utilities, Emergency Services

Geographical Scope
EMEA and Latin America

Supported Languages
Multi-language support - English, German, French, Italian and Arabic



KEY FEATURES

- Early screening of potential employees saves time in unnecessary interviews and delivers a higher percentage of suitable candidates
- Powerful research tool delivers targeted, independent survey results via any channel of choice including SMS, email or via the web
- Adherence module applies best-practice risk, compliance and process adherence techniques to help minimise risk and optimise efficiency
- Optional integrated voice and screen recording ensures all evaluations are based on factual and proven information

SYSTEM REQUIREMENTS

DataVoice Unique is entirely IP-based and requires only IP connectivity to the Motorola AIS server when deployed with integrated voice recording. In stand-alone applications, no external system requirements apply.

Radio Requirements of the Spescom DataVoice Unique system – applicable for all radios or consoles.

“SPESCOM DATAVOICE DESIGNS AND DEVELOPS PROPRIETARY SOLUTIONS THAT RECORD, MANAGE, RE-CREATE AND ANALYSE VOICE AND SCREEN TRANSACTIONS. WE ALSO OFFER COMPREHENSIVE PERFORMANCE MANAGEMENT SOLUTIONS, CUSTOMER QUALITY ASSURANCE RESEARCH AND OTHER PROFESSIONAL SERVICES. OUR SOLUTIONS ARE TAILORED TO ENHANCE COMMUNICATION BETWEEN ORGANISATIONS AND THEIR CUSTOMERS AND SUPPORT BUSINESS PROCESSES, ASSISTING THEM TO MEET SECURITY, LEGAL AND GOVERNANCE REQUIREMENTS, MITIGATE RISK, OPTIMISE WORKFORCE PRODUCTIVITY AND ENSURE QUALITY CUSTOMER INTERACTIONS.”



SPESCOM
Spescom DataVoice
Spescom Park, Cnr. Alexandra
Avenue & Second Road,
Halfway House, Midrand, 1685
PO Box 288, Halfway House, 1685,
South Africa
www.spescom.com

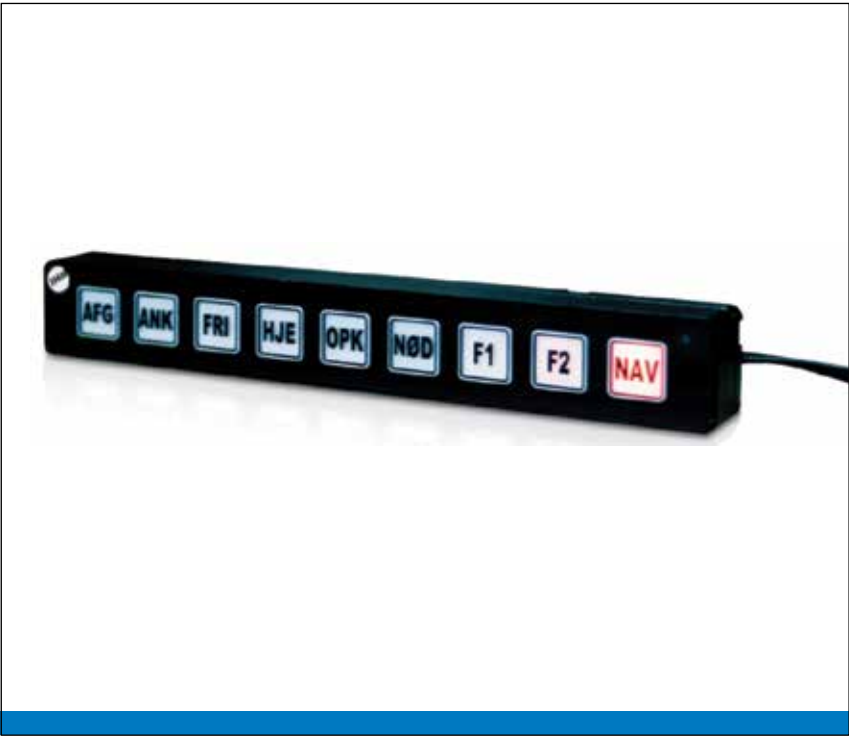


IHM STATUS PANEL

IHM

OVERVIEW

IHM Status Panel makes it simple to transmit status and SDS messages from a mobile TETRA installation. The Status Panel makes it possible to receive a job including destination address and then automatically program the destination to a connected Garmin Navigator for this to start navigating.



Target Markets
Police, Fire Brigade and Ambulance services

Geographical Scope
Europe

Supported Languages
All languages supported by application

KEY BENEFITS

Send jobs to police cars, fire trucks or ambulances from a control center including destination address for fast and precise dispatching and total understanding. You receive fast and accurate status messages from your vehicles, providing you with an overview of the actual status of your resources.

Efficient information Exchange

Provides the most efficient way for information to be exchanged between the vehicle and control centre.

One Touch Operation

Status messages can be sent to several control rooms (GSSI/ISSI) by pressing just one key. After having sent the status message the button will remain illuminated. In this way you can see the latest message sent to the control centre at a glance.

Easy to Use

Features large buttons allowing users to easily send messages even while wearing gloves.

Quick Navigation

With a Garmin Navigator connected to the Status Panel, vehicles can receive jobs including destination address. The destination will automatically be transferred to the navigator for instant navigation.



KEY FEATURES

Radio Requirements of the IHM Status Panel – applicable for MTM800E, MTM5400 and MTP850S TETRA radios with Dimetra IP System Release 7.1, Dimetra IP Compact or Scalable Dimetra Release 4.1 or Dimetra IP Micro/Dimetra LiTE Release 2.0.

- Customisable button text and colours
- Rugged design - fully dust and water proof
- Small size fits into almost any public safety vehicle
- Messages for 'Depart' and 'Arrive' can be sent automatically
- Proven technology with over 1500 units installed

SYSTEM REQUIREMENTS

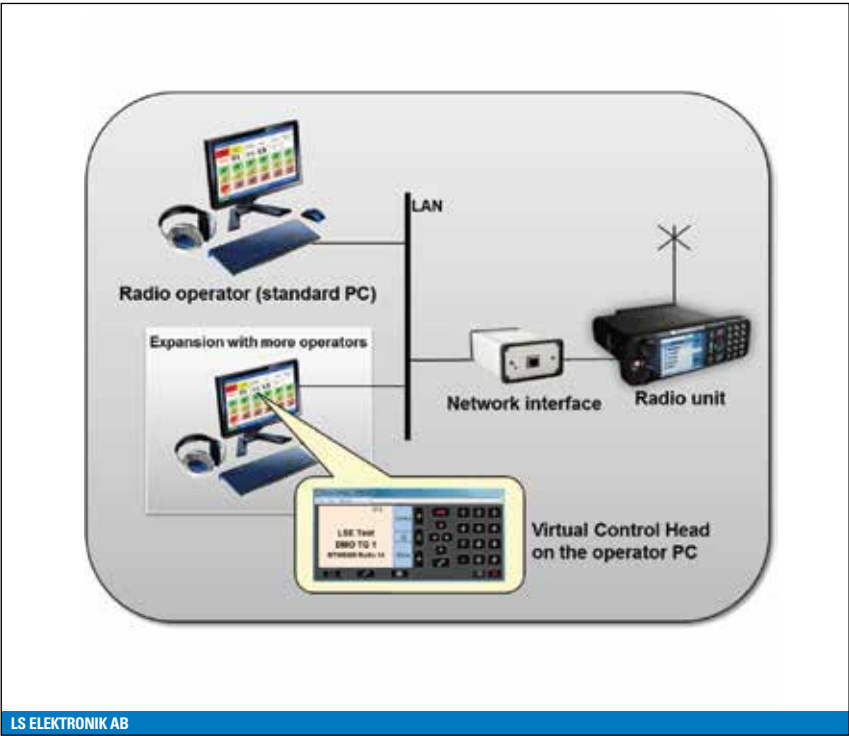
Connects to MOTOROLA TETRA MTM800E, MTM5400 and MTP850S in DCK Car kit via a PEI interface. Connects to Garmin Navigator with FMI cable.

“IHM P/S WAS FOUNDED IN 1981 UNDER THE NAME INGENIOERFIRMAET H. MORTENSEN A/S. THE NAME OF THE COMPANY WAS CHANGED TO THE SHORTER AND MORE INTERNATIONAL NAME IHM P/S IN OCTOBER 2011 - IN CONNECTION WITH GLOBAL VENTURE WHERE WE SEEK NEW CHALLENGES AND OPPORTUNITIES IN MARKETS ALL OVER THE GLOBE. IHM IS ONE OF DENMARK’S LEADING MANUFACTURERS OF SOLUTIONS AND EQUIPMENT FOR TELE- AND RADIO COMMUNICATIONS. WE ARE BASED IN THE DANISH CAPITAL, COPENHAGEN.”

MIMER SOFTRADIO LS ELEKTRONIK AB

OVERVIEW

Mimer SoftRadio is a dispatch application that allows communication with users on different radio networks. It works over LAN, WAN and also over the Internet, with audio provided using VoIP. In addition to connecting to any type of radio, phone or intercom from a PC dispatcher, it also allows cross patching.



Target Markets
All TETRA Users

Geographical Scope
Worldwide

Supported Languages
English, Swedish, German, Danish, Turkish and Polish



KEY FEATURES

- Ability to control one or many TETRA radios
- As a standard it supports 8 or 30 radios, which can be expanded upon request
- Graphical User Interface (GUI) looks and feels the same as a radio
- Proven technology with more than 1000 radios being controlled across 35 countries
- Not platform dependent
- Desktop microphone provided
- Works with standard PC audio accessories
- Add-ons to the system includes cross patch between TETRA, analogue and DMR; phone connection; voice recording; status message logging; and I/O control.

SYSTEM REQUIREMENTS

The operator PC is required to have WinXP, Win7 or Win8. Requires an IP network connection and an audio card with microphone and speakers.

Supported on all platforms, including Dimetra IP Scalable, Dimetra IP Compact and Dimetra IP Micro.

“LSE IS A SWEDISH ENGINEERING COMPANY, ACTIVE FOR OVER 20 YEARS. OUR MISSION IS TO DEVELOP AND DELIVER CUSTOM DESIGNED ELECTRONIC HARDWARE AND SOFTWARE - PARTICULARLY IN COMBINATION WITH RADIO EQUIPMENT. THROUGH OUR SYSTEM, MIMER SOFTRADIO, WE HELP DISPATCHERS TO CONNECT USERS ALL OVER THE WORLD.”



LS Elektronik AB
Box 8301
SE 163 08 Spånga,
Sweden

Phone: +46-8 36 42 25
Web: www.lse.se
www.softradio.se



SSIC SMART SERIAL INTERFACE CABLE SYSTEL

OVERVIEW

The Systel Smart Serial Interface Cable is a new interface between any Motorola TETRA portable radio and serial barcode readers. An effective solution for sending data from readers to individuals or storage applications via your TETRA radio.



Target Markets
Police, Airports, Hospitals, Ambulance and Retail Stores

Geographical Scope
Europe, MEA

Supported Languages
English and Arabic



KEY FEATURES

Radio Requirements of Systel SSIC – applicable for Motorola MTH800, MTP850, MTP850S, MTP850Ex, MTP830S and MTP810Ex TETRA radios.

- Supports linear barcodes: Code_128, Code32, Code93, Ean13, Ean8,Isbn, Ismn,Ltf14 Jan13, Jan8, NumlyNumber, Pzn, Scc14, Sccc18, SwissPostParcel, UccEan128, Upc_E, UspsPicUccEan128
- Supports two dimensional barcodes: AztecCode, DataMatrix, MacroPdf417, PDF417, QRCode, Semacode
- Compact, fixable & easy to use

Requires TETRA network coverage, Motorola portable radio and SSI cable.

SYSTEM REQUIREMENTS

“AS A LEADING PROVIDER OF MISSION AND BUSINESS CRITICAL INFORMATION AND COMMUNICATION SOLUTIONS, WE HAVE THE EXPERIENCE AND EXPERTISE TO DELIVER LEVELS OF NETWORK SECURITY AND RESILIENCE THAT HAVE ONLY BEEN AVAILABLE TO LARGE GOVERNMENT CUSTOMERS”



Systel
2A Shafik Mansour St. , Zamalek
Cairo - EGYPT
www.systel.com.eg



TETRA INTERACTIVE DISPLAY (TID) SYSTEL

OVERVIEW

Systel TETRA Interactive Display (TID) is a touch screen computing platform which allows for direct interfacing with a TETRA radio terminal.



Target Markets
Police, Ambulance, Fire, Transport and Delivery

Geographical Scope
Europe, MEA

Supported Languages
English and Arabic



KEY FEATURES

- Easy-to-use touch screen computing platform
- High Resolution 65K colour display
- Standalone device which can be integrated with existing backend systems to support business processes

SYSTEM REQUIREMENTS

Requires TETRA network coverage, TETRA radio and interface cable.
Supported by Dimetra IP Scalable.

“AS A LEADING PROVIDER OF MISSION AND BUSINESS CRITICAL INFORMATION AND COMMUNICATION SOLUTIONS, WE HAVE THE EXPERIENCE AND EXPERTISE TO DELIVER LEVELS OF NETWORK SECURITY AND RESILIENCE THAT HAVE ONLY BEEN AVAILABLE TO LARGE GOVERNMENT CUSTOMERS”



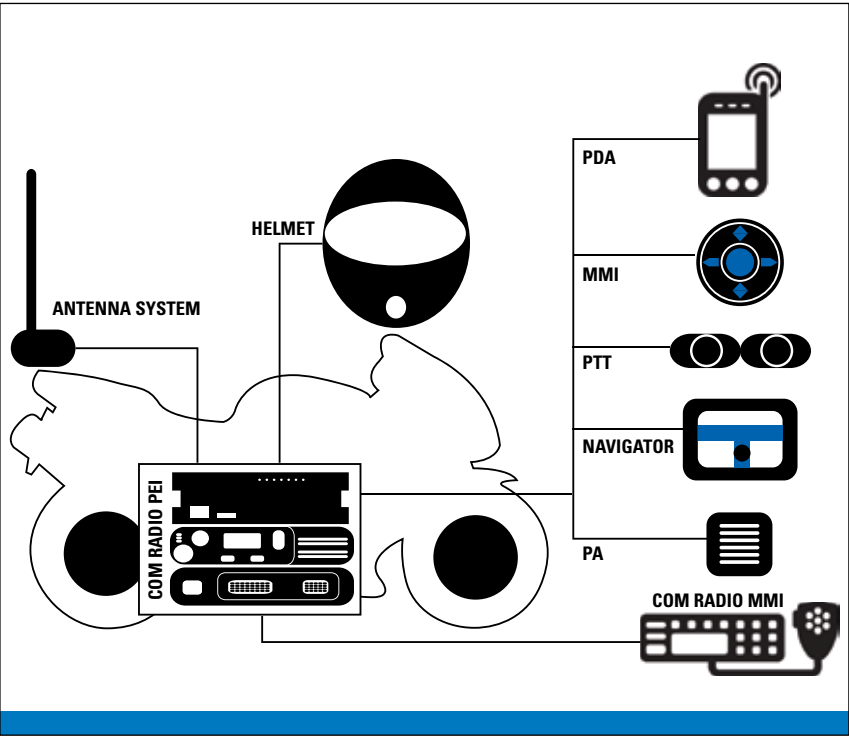
Systel
2A Shafik Mansour St. , Zamalek
Cairo - EGYPT
www.systel.com.eg



ZENIPOL FOR MOTORCYCLE ZENITEL

OVERVIEW

ZeniPol for Motorcycle is an all-in-one motorcycle solution providing a reliable and efficient wireless communications platform for Police Motorcycles and other vehicles - essential for continuous communications at high speeds.



Target Markets
Rescue, Police and Military

Geographical Scope
Worldwide

Supported Languages
English, Danish, Norwegian and Italian are supported.
New languages can be loaded as setup-file.



KEY FEATURES

- TETRA, MOTOTRBO and VHF/UHF communication integration
- Navigator, FM radio and GSM telephone
- WLAN and Bluetooth Audio connection
- Specially designed MMI (joystick) and touch screen on the Garmin device, is used for selection and operation.
- Easy to use and excellent sound quality
- Works with Motorola radios
- Personalise the motorcycle to individual users and manage fleets with over-the-air-programming
- Many ZeniPol systems already in operation on police motorcycles with a "voice speed" up to 200 km/h

SYSTEM REQUIREMENTS

The ZeniPol application requires an interface to Motorola TETRA radios, MOTOTRBO or analogue VHF/UHF radios.

Radio Requirements of ZeniPol for motorcycle – applicable for all TETRA, MOTOTRBO and analogue VHF/UHF radios.

Supported on Dimetra IP Scalable, Dimetra IP Micro and Dimetra IP Compact.

"ZENITEL IS A LEADING SYSTEM INTEGRATION SOLUTION PROVIDER WITHIN THE FIELD OF PROFESSIONAL RADIO COMMUNICATION SERVING MARKETS REQUIRING SECURE AND CRITICAL COMMUNICATION. ZENITEL HAS DEVELOPED ITS OWN UNIQUE TETRA AND MOTOTRBO APPLICATIONS FOR THE POLICE, FIRE, DEFENCE, AIRPORTS, MARINE, PRISONS, RAIL AND TRANSPORTATION COMPANIES, UTILITIES AND INDUSTRY. THIS ALSO INCLUDES CONFINED AREA COVERAGE SOLUTIONS WITH RADIATING CABLES AND REPEATERS FOR IN-DOOR BUILDINGS, TUNNELS AND OIL RIG PLATFORMS."

"THE CORE OF OUR BUSINESS IS TO PROVIDE ONBOARD COMMUNICATION SYSTEMS FOR SHIPS; AND ANALOGUE AND DIGITAL (VOIP), STATE-OF-THE-ART INTERCOM SOLUTIONS ON SHORE. WE OPERATE WITH GLOBAL SCOPE AND ARE SUPPORTED BY A VAST NUMBER OF COUNTRY OFFICES, LOCAL DEALERS AND RESELLERS."



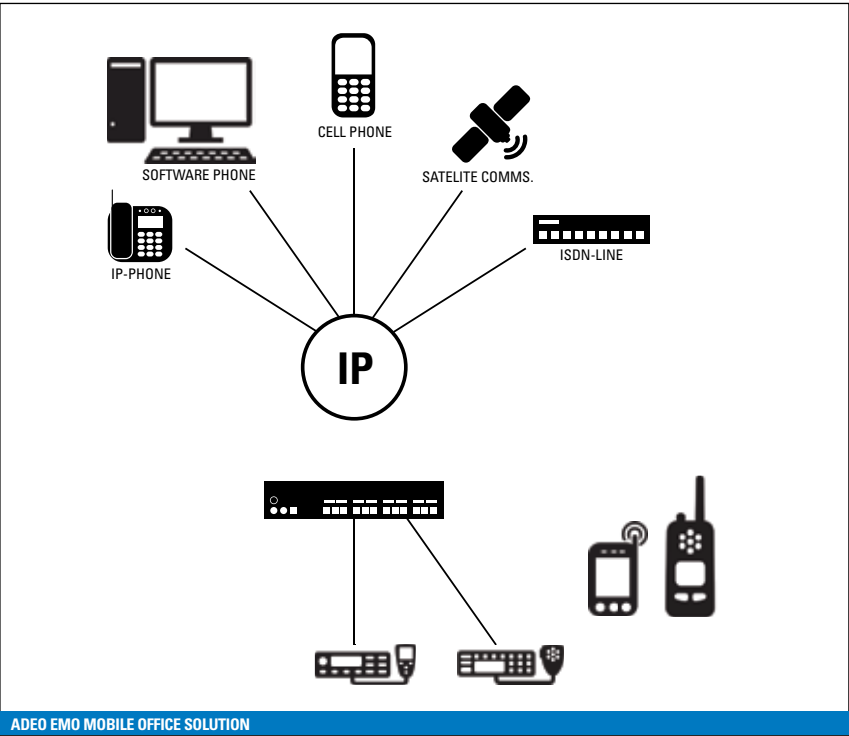
ZENITEL DENMARK A/S
Park Alle 350 A, DK-2605
Broendby, Denmark
Switchboard: +45 4343 7411,
Fax: +45 4343 7522
info.denmark@zenitel.com
www.zenitel.com



ADEO CMO COMMUNICATIONS MANAGEMENT SOLUTION EUROCOM

OVERVIEW

The ADEO CMO software suite developed by Eurocom allows the management of heterogeneous communication networks. An efficient and reliable solution for radio operators to communicate using different radio technologies. It allows a radio user to cross communicate with different networks, based on different technology directly from the device with or without the Control Room operator.



Target Markets
Police, Ambulance, Security Services, Escort Services, Fire Brigade and Army

Geographical Scope
Europe, Asia, Latin America and North America

Supported Languages
English, Spanish, Italian and French



KEY FEATURES

- E-COM Server software connects directly to the radios and collects data such as GPS position, messages, alarm and voice communication while managing all control room functionalities and a communications log
- E-COM Client software is a remote interface allowing management of dispatching functions – modules include Logbook for organising radio user activity, Lone Worker, Patrol Management and SMS
- E-COM Client support also Google Earth™ to display GPS positions and GPSbased AVL (Automatic Vehicle Location)
- E-MAP Client, NAVTEQ™ cartography-based software displays radio position, supports text messaging and manages Telemetry function
- Managing of IP Video Streaming to integrate Video Surveillance System
- Integrates INTEROX I-Radio Gateway for cross patching voice services from VoIP – ISDN – PBX – GSM – 3G –DMR – TETRA – Analog systems
- Direct call from TETRA terminal to a different radio network such as DMR, Analog or SATELLITE phones

SYSTEM REQUIREMENTS

Supports IP-based technology, MAN networks and generic Internet connections. No specific radio requirements.

Radio Requirements of Eurocom ADEO CMO software – applicable for all Motorola radios

“OUR MISSION IS TO KEEP A HIGH LEVEL OF CUSTOMER SATISFACTION THROUGH CONTINUOUS INNOVATION AND TECHNOLOGICAL IMPROVEMENT, ALLOWING COMMUNICATION EVERYWHERE.”



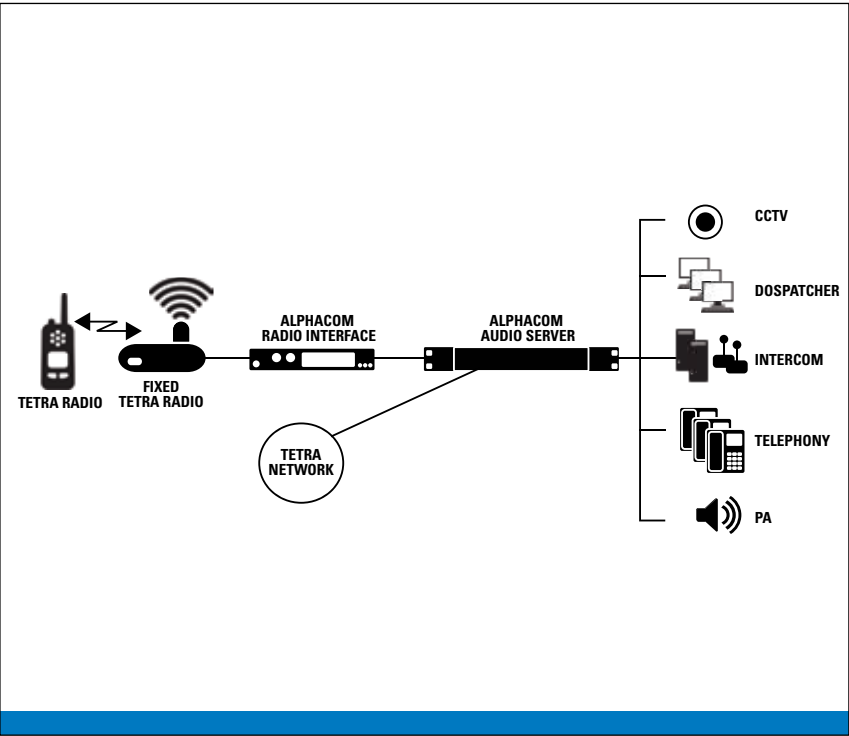
Eurocom
Telecomunicazioni Srl
Riccione – Bologna – Roma
Viale Carpegna,9 -
Riccione 47838 (RN)
Italy
www.eurocomtel.com



TETRA INTEGRATION ON ALPHACOM INTERCOM SYSTEMS ZENITEL

OVERVIEW

ZENITEL Alphacom is an application that allows seamless integration of TETRA radio communications into the well-proven STENTOFON AlphaCom intercom system using radio or SIP interfacing - the ideal solution for complete communications coverage.



Target Markets
Prison, Museum, Police and Fire service stations, Industry and other markets

Geographical Scope
Europe, Asia and Latin America

Supported Languages
English



KEY FEATURES

- Uses the STENTOFON IP-ARIO interface (audio, I/O and serial gateway) connected to a TETRA databox radio
- Group call and semi-duplex private calls are supported from any intercom station to the TETRA system
- Automatic divert of incoming calls to an intercom station
- Calling ID on receiving intercom station
- Predefined Call Back
- Optional integration using a SIP interface
- Supports all standard intercom features from a TETRA radio including private call, group call, broadcast call, group messages and busy override/notify

SYSTEM REQUIREMENTS

The ZENITEL Alphacom works on TETRA networks and requires an Interface to a Motorola MTM5400 or MTM800 Enhanced databox using ETSI PEI and/or a SIP interface to Motorola Dimetra IP Micro or Dimetra IP Compact.

Radio Requirements of ZENITEL Alphacom – applicable for all TETRA radios.

“ZENITEL IS A LEADING SYSTEM INTEGRATION SOLUTION PROVIDER WITHIN THE FIELD OF PROFESSIONAL RADIO COMMUNICATION SERVING MARKETS REQUIRING SECURE AND CRITICAL COMMUNICATION. ZENITEL HAS DEVELOPED ITS OWN UNIQUE TETRA AND MOTOTRBO APPLICATIONS FOR THE POLICE, FIRE, DEFENCE, AIRPORTS, MARINE, PRISONS, RAIL AND TRANSPORTATION COMPANIES, UTILITIES AND INDUSTRY. THIS ALSO INCLUDES CONFINED AREA COVERAGE SOLUTIONS WITH RADIATING CABLES AND REPEATERS FOR IN-DOOR BUILDINGS, TUNNELS AND OIL RIG PLATFORMS.”

“THE ZENITEL GROUP COMPRISES THREE BRANDS; STENTOFON SECURITY COMMUNICATION SYSTEMS, VINGTOR INTEGRATED ONBOARD COMMUNICATION SOLUTIONS FOR THE MARINE MARKETS, AND ZENITEL FOR RADIO COMMUNICATION SOLUTIONS.”



ZENITEL NORWAY AS
Sandakerveien 24c
P.O.Box 4498, NO-0403 Oslo,
Norway
Switchboard: +4740002520,
Fax: +47 22 37 85 32
info@zenitel.com
www.zenitel.com



ZONITH CENTRALISED LONE WORKER (CLW)

ZONITH

OVERVIEW

ZONITH Centralised Lone Worker is a Windows-based software application that monitors people by sending messages to their radio or phone - an essential solution for ensuring lone worker safety.

Schedule

Action Filters

Locations

Contact Persons

Indoor Positioning

Users

Competencies

On-Call Staff	CLW Status	Action	
MOTOTRBO 20	●	Activate	Centralised Lone Worker is deactivated
Brain Cox	●	Activate	Centralised Lone Worker is deactivated
Stuart Delany	●	Deactivate	Centralised Lone Worker is awaiting Alive Acknowledge from user
Simon Hughes	●	Activate	Centralised Lone Worker is deactivated
Suzanne Lee	●	Deactivate	Centralised Lone Worker is activated
Stephen Nugent	●	Activate	Centralised Lone Worker is deactivated
Barry Simmons	●	Deactivate	Centralised Lone Worker is awaiting Alive Acknowledge from user
Janet Smith	●	Deactivate	Centralised Lone Worker is activated
Jonathan Surname	●	Activate	Centralised Lone Worker is deactivated
Nicola Waters	●	Deactivate	Centralised Lone Worker is activated

LONE WORKER EXITS 'SAFE AREA'

LONE WORKER IS SCHEDULED TO ACTIVATE

ALIVE CHECK MESSAGES BEGIN

OK

OK

NO RESPONSE RETURNED!

RESPONDERS TAKE ACTION

KEY BENEFITS

Keeping workers safe is a critical objective for every organisation. ZONITH CLW monitors personnel and immediately notifies support staff if replies are not received so action can be taken. This essential application gives workers assurance that their safety is being monitored even if their equipment fails or is out of coverage.

Cost Savings

Simultaneously supports TETRA, MOTOTRBO DMR, MPT1327 and mobile phones from a single centralized installation. Automatically activates and deactivates Lone Worker services across an entire work force, eliminating recurring charges.

Intelligent Solution

Activates automatically based on the time of day or your location within a building Works with ZONITH Indoor Positioning to create Safe Areas, activating and deactivating when a person leaves and returns to a Safe Area.

Flexible and Scalable

Allows you to start small and develop your Lone Worker solution without the need to purchase additional hardware by using existing radios. Supplied tool kit enables people to create user profiles for total protection of an entire workforce.

Automatic Scheduling

Can be configured for individuals or large groups to turn on or off automatically at any time of day or night. A simple graphical user interface provides an overview of the Lone Worker status of each employee.



KEY FEATURES

- ‘Alive Check’ messages can be sent whenever required - Lone Workers have a fixed amount of time to respond before an alarm is raised
- Retry option gives users the flexibility to wait for the next ‘Alive Check’ without triggering an alarm
- Messages can be defined and easily changed by the administrator to guarantee that only the right people are responding
- Automatic Alarm Escalation when a Lone Worker fails to respond to an ‘Alive Check’ message
- Password protected software installed on a single central computer for total security to prevent unauthorised access
- Accessible using any connected web browser

SYSTEM REQUIREMENTS

The ZONITH CLW works on TETRA networks and requires a Windows-based computer for software installation.

Radio Requirements of the ZONITH CLW – applicable for all TETRA radios and networks.

“FOUNDED IN 2000 BY A GROUP OF NOKIA ENGINEERS, ZONITH A/S DEVELOPS SOFTWARE THAT MAKES LIFE EASIER FOR PROFESSIONALS WHO HAVE TO DEAL WITH ALARMS. WE SPECIALIZE IN ALARM HANDLING AND NOTIFICATION SOLUTIONS, SOLVING TASKS AT ALL LEVELS OF COMPLEXITY, RANGING FROM SIMPLE NOTIFICATION SOLUTIONS TO LARGE ALARM HANDLING SYSTEMS. ZONITH PROVIDES VALUE ADDED SOFTWARE APPLICATIONS THAT MAXIMISE THE BENEFITS OF TETRA TO IMPROVE THE SAFETY, SECURITY AND SITUATIONAL AWARENESS OF PUBLIC AND PRIVATE SECTOR EMPLOYEES.”

Target Markets

Public Safety, Oil & Gas, Power Utilities, Heavy Industry, Retail, Security and Healthcare

Geographical Scope

Europe, Asia, North America, Latin America and Australia

Supported Languages

English



ZONITH A/S
Gammel Kongevej 39E
DK-1610 Copenhagen V
Denmark
www.zonith.com

ZONITH UK LTD.
Sheraton House
Cambridge CB3 0AX
United Kingdom
www.zonith.com



M-VISION CALL OUT SYSTEM MOTOROLA WITH CAPITA

OVERVIEW

Provided by Motorola in partnership with Capita, the M-VISION Call Out application uses a geographical user interface to send, receive and monitor location information to simplify emergency communications. A reliable resource for efficient management of minor events and major incidents requiring personnel coordination and rapid exchange of information.



Target Markets
Emergency Service Agencies and TETRA Radio Console Customers

Geographical Scope
Europe, Asia and Latin America

Supported Languages
English, Spanish and Arabic

CAPITA

KEY BENEFITS

Being able to send instant data communications to multiple recipients simultaneously over a variety of channels is essential for efficient incident management. Developed using industry standard Microsoft™ languages and the Microsoft™ .NET framework, Capita M-VISION Call Out is a multi-lingual solution for agencies worldwide.

Multi-lingual Platform

M-VISION Call Out can be deployed in international languages such as Arabic or dual language for agencies requiring both English and local language operations.

Improves Efficiency

Emergency responders need to make every second count. Functions such as presence, instant messaging, outbound calling and conferencing saves precious time and ultimately lives.

Saves Costs

Because Capita solutions are scalable, customers can grow and expand their systems to meet business needs and make better use of existing infrastructure.

Meets Specific Needs

Emergency response agencies can now enjoy the benefits of a Command and Control system without the need to invest in a full computer-aided dispatch solution. This gives them the freedom to focus on their specific needs.



KEY FEATURES

- Supports data communications over a variety of delivery channels such as TETRA, Short Message Service or instant messaging delivered by GPS
- Two way data communications between control room and responders
- Secure and resilient – call out messages are sent over a priority channel on a secure network
- Send an instant message containing details of an event
- Perform a call-out message requesting a response – this response triggers a status change within the application and the recipient is automatically assigned to the event talk group (optional)
- Send a message with a URL or an attachment (e.g. picture of missing person)
- Tracking and Auditing - enables tracking and auditing of responses

SYSTEM REQUIREMENTS

- Microsoft Windows .NET Environment and Operating Systems
- Industry Standard Hardware
- Third Party Mapping Data

Radio Requirements of Capita M-VISION Call Out Solutions – all Motorola TETRA radios.

“CAPITA’S SECURE INFORMATION SOLUTIONS BUSINESS IS THE SUPPLIER OF TECHNOLOGY-DRIVEN EFFECTIVENESS AND EFFICIENCY TO PUBLIC SECTOR ORGANISATIONS. WORKING WITH CENTRAL AND LOCAL GOVERNMENT, PUBLIC SAFETY AND JUSTICE AGENCIES AND THIRD SECTOR ORGANISATIONS, ITS MISSION IS TO HELP ITS CUSTOMERS INTELLIGENTLY MAXIMISE THE USE OF ASSETS AND RESOURCES TO ACHIEVE OPTIMAL OPERATIONAL EFFICIENCY.”

Contact your local Motorola representative for further details on availability of this application.

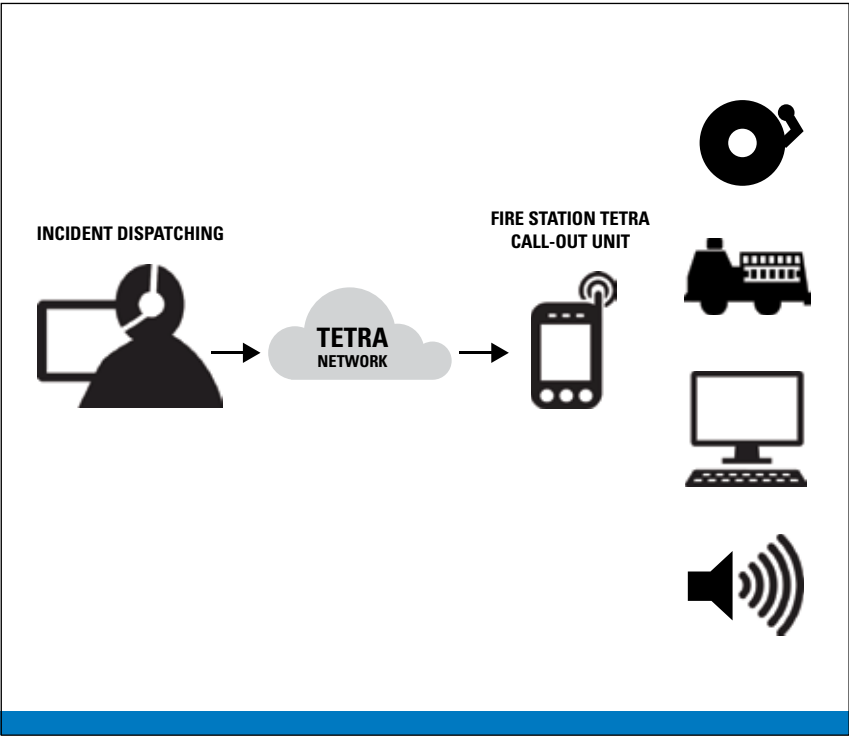
CAPITA



FIRE STATION TETRA CALL-OUT ZONITH

OVERVIEW

ZONITH Fire Station TETRA Call-out is an automatic incident dispatcher to PA, VGA and Audio Announcer systems. An immediate and effective way of notifying fire crews of incidents and putting a call-out into operation.



Target Markets
Fire Stations

Geographical Scope
Europe, Asia, Latin America, Australia, Canada and Greenland

Supported Languages
English



KEY FEATURES

Radio Requirements of the ZONITH Fire Station TETRA Call-out – applicable for all TETRA radios.

- Remote triggering of up to 4 built-in relays to activate PA systems, open or close gates or control of any other technical equipment at the fire station
- Control via Motorola Call-Out messages, SDS text messages or SMS (GSM) messages
- Displays incident message content in clear text on VGA screens
- Incident text message is converted to audio messages using text-to-audio synthesis

SYSTEM REQUIREMENTS

Interfaces to Dimetra via a Mobile TETRA radio PEI interface. The solution is based on a standalone box unit and does not require any server environment to run.

“FOUNDED IN 2000 BY A GROUP OF NOKIA ENGINEERS, ZONITH DEVELOPS SOFTWARE THAT MAKES LIFE EASIER FOR PROFESSIONALS WHO HAVE TO DEAL WITH ALARMS AND STAFF SAFETY. ZONITH SPECIALIZES IN ALARM HANDLING AND NOTIFICATION SOLUTIONS, SOLVING TASKS AT ALL LEVELS OF COMPLEXITY, RANGING FROM SIMPLE NOTIFICATION SOLUTIONS TO LARGE ALARM HANDLING SYSTEMS. ZONITH PROVIDES VALUE ADDED SOFTWARE APPLICATIONS THAT MAXIMISE THE BENEFITS OF TETRA TO IMPROVE THE SAFETY, SECURITY AND SITUATIONAL AWARENESS OF PUBLIC AND PRIVATE SECTOR EMPLOYEES.”

ZONITH A/S
Gammel Kongevej 39E
DK-1610 Copenhagen V
Denmark
www.zonith.com

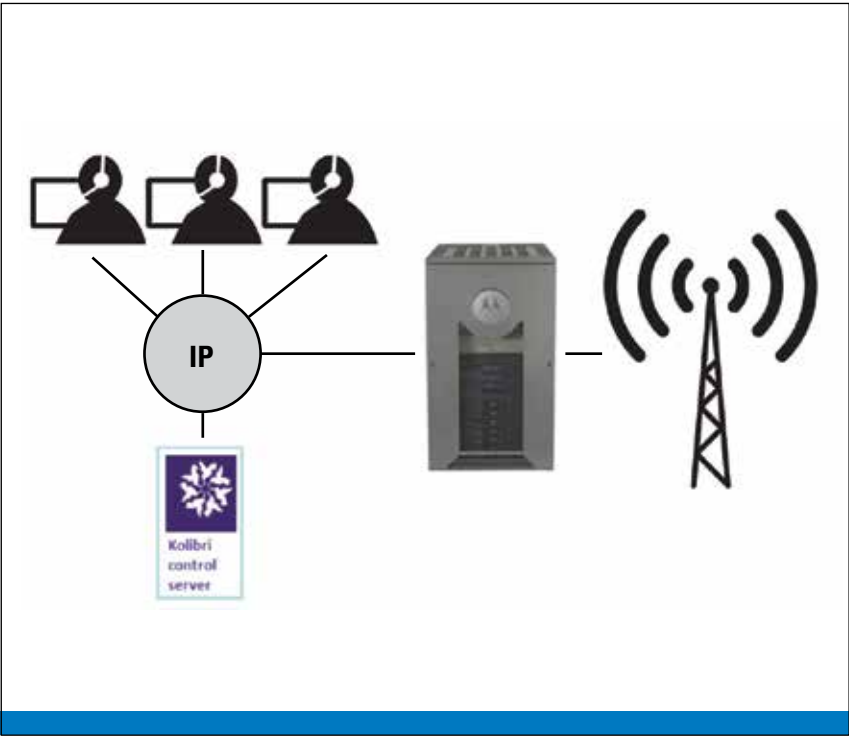
ZONITH UK LTD.
Sheraton House
Cambridge CB3 0AX
United Kingdom
www.zonith.com



WIRED CONNECTED DISPATCH & TRACKING FOR LARGE SYSTEMS KOLIBRI

OVERVIEW

Kolibri is a control room solution for radio dispatch, map-based tracking in mission critical environments. An easy and cost effective way of managing and monitoring resources that can be tailored to individual needs.



Target Markets
Public safety, Oil & Gas, Harbour Industry, Airports, Government Institutes, Public services, Transportation and Security firms

Geographical Scope
Europe, Asia, Latin America, Rest of World

Supported Languages
Any language can be supported since all GUI text is stored in the database. Currently available in English, Spanish, French, German, Danish and Dutch.



KEY BENEFITS

Dispatching and keeping track of resources using maps is fundamental for any control room. Kolibri can be seamlessly integrated with telephony, telemetry, video surveillance, incident management and other systems or tailored to specific needs. The wired version uses an IP wired connection to one or more radio networks and can be combined with a wireless solution if required.

Cost Effective for Large Networks

Wired connection is ideal for networks with high voice traffic capacity.

Supports a variety of control rooms

IP based architecture enables a high scalability from a single console to a large, geographically dispersed multi-console configuration.

Smooth Migration

The ability to simultaneously connect to multiple radio networks enables smooth migration scenarios.

High Availability

The optional use of redundant servers on different locations provides high availability and fault tolerance.

Easily Adaptable

The strong configurability of the GUI and automated enterprise logic means Kolibri can be tailored to individual needs to meet specific customer requirements.

High Situational Awareness

The integrated user interface for radio dispatch, map based tracking and optional other systems provides a high situational awareness.



KEY FEATURES

Radio Requirements of Kolibri wired – all Motorola TETRA radios and all Dimetra IP releases.

- Seamless integration of dispatching and map based tracking
- All dispatch operations also available on map
- Voice communication and text messaging
- Logging and replay of all events and speech
- Radio system independent
- Simultaneous use of multiple radio systems
- True IP based architecture
- Strong configurability to user requirements while remaining COTS
- Scalable from single console to multi-console WAN configuration
- Optional integration with other systems
- Wired IP connections to radio networks

SYSTEM REQUIREMENTS

Requires one or more radio networks such as Dimetra or MOTOTRBO, a wired IP connection to radio network infrastructure, radio network console interface licences and equipment, standard Windows PC platform and IP Infrastructure for Kolibri servers and consoles.

“KOLIBRI SYSTEMS PROVIDES SCALABLE CONTROL ROOM SOLUTIONS FOR RADIO DISPATCH, MAP BASED TRACKING AND TELEPHONY IN MISSION CRITICAL ENVIRONMENTS. WE PROVIDE EASY INTEGRATION WITH TELEMETRY, VIDEO SURVEILLANCE, INCIDENT MANAGEMENT SYSTEMS AND OTHER SYSTEMS. THE INTEGRATED USER INTERFACE GUARANTEES A HIGH SITUATIONAL AWARENESS. KOLIBRI IS BASED ON 25 YEARS EXPERIENCE IN CONTROL ROOM SOLUTIONS INCLUDING THE DISPATCH SOLUTION FOR THE NATIONWIDE DUTCH PUBLIC SAFETY TETRA NETWORK.”



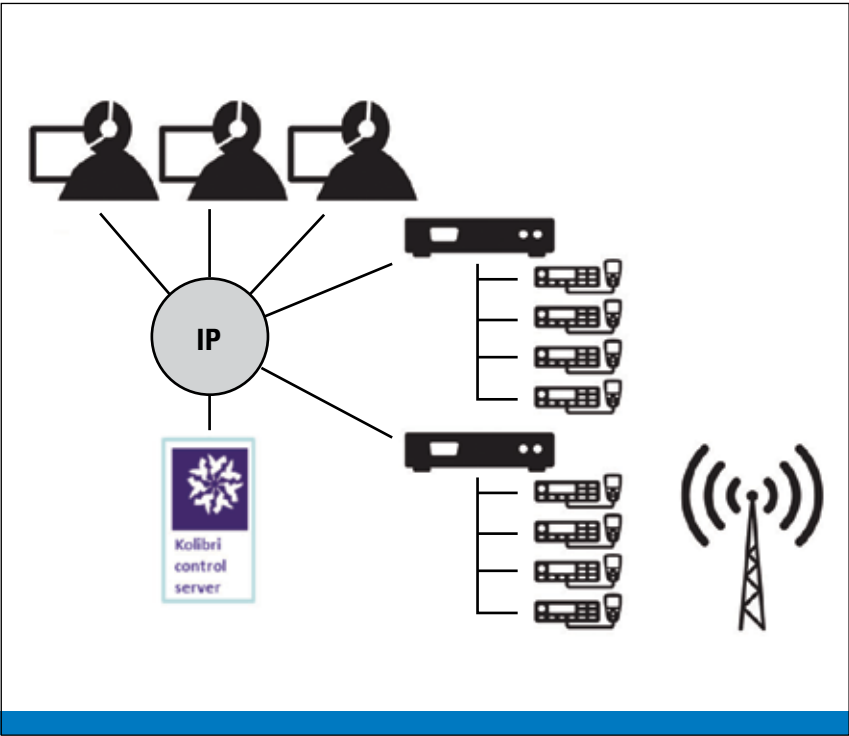
Kolibri Systems
“Boston House”
Motorenweg 5T
2623 CR Delft
The Netherlands
www.kolibri-systems.com



WIRELESS CONNECTED DISPATCH & TRACKING FOR SMALL SYSTEMS KOLIBRI

OVERVIEW

Kolibri is a control room solution for radio dispatch, map-based tracking in mission critical environments. An easy and cost effective way of managing and monitoring resources that can be tailored to individual needs.



Target Markets
Public safety, Oil & Gas, Harbour Industry, Airports, Government Institutes, Public services, Transportation and Security firms

Geographical Scope
Europe, Asia, Latin America, Rest of World

Supported Languages
Any language can be supported since all GUI text is stored in the database. Currently available in English, Spanish, French, German, Danish and Dutch.



KEY FEATURES

Radio Requirements of Kolibri wireless – all Motorola TETRA radios and all Dimetra IP releases.

- Seamless integration of dispatching and map based tracking
- All dispatch operations also available on map
- Voice communication and text messaging
- Logging and replay of all events and speech
- Radio system independent
- Simultaneous use of multiple radio systems
- True IP based architecture
- Strong configurability to user requirements while remaining COTS
- Scalable from single console to multi-console WAN configuration
- Optional integration with other systems
- Wireless connection uses a pool of radios shared by consoles - Kolibri Media Servers connect the radio pool to the IP infrastructure

SYSTEM REQUIREMENTS

Requires one or more radio networks such as Dimetra or MOTOTRBO, a pool of one or more mobile radios, standard Windows PC platform and IP Infrastructure for Kolibri servers and consoles.

“KOLIBRI SYSTEMS PROVIDES SCALABLE CONTROL ROOM SOLUTIONS FOR RADIO DISPATCH, MAP BASED TRACKING AND TELEPHONY IN MISSION CRITICAL ENVIRONMENTS. WE PROVIDE EASY INTEGRATION WITH TELEMETRY, VIDEO SURVEILLANCE, INCIDENT MANAGEMENT SYSTEMS AND OTHER SYSTEMS. THE INTEGRATED USER INTERFACE GUARANTEES A HIGH SITUATIONAL AWARENESS. KOLIBRI IS BASED ON 25 YEARS EXPERIENCE IN CONTROL ROOM SOLUTIONS INCLUDING THE DISPATCH SOLUTION FOR THE NATIONWIDE DUTCH PUBLIC SAFETY TETRA NETWORK.”



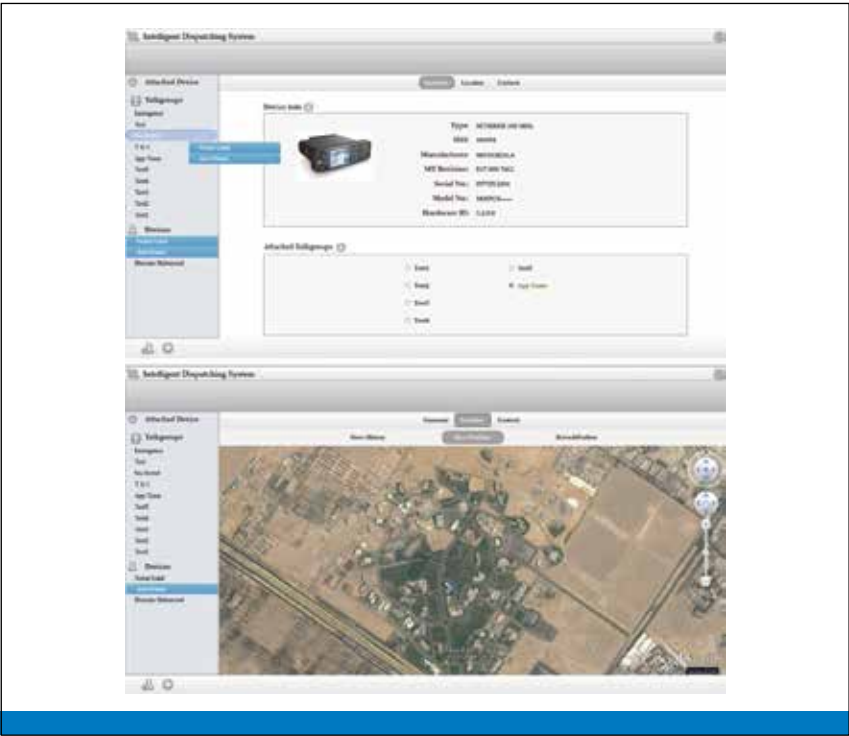
Kolibri Systems
“Boston House”
Motorenweg 5T
2623 CR Delft
The Netherlands
www.kolibri-systems.com



GEOGRAPHICAL DYNAMIC REGROUPING AND MONITORING SYSTEM

OVERVIEW

The Systel stand-alone Dynamic Regrouping and Monitoring System is a dispatching solution providing full control over any system requiring dispatcher access of multiple radios. An effective solution that gives operators the ability to make faster decisions.



Target Markets
Police, Ambulance, Fire, Government, Industrial, CAP Companies and Transportation Facilities

Geographical Scope
Europe, MEA, Asia

Supported Languages
English and Arabic



KEY FEATURES

Radio Requirements of Systel TRIM systems

- Communicate with devices in a talkgroup through Push-To-Talk
- Regroup radios based on current location
- Retrieve all information and location at any time upon request
- Add, edit and remove contacts
- Works with Motorola radios

SYSTEM REQUIREMENTS

Requires Tetra network coverage, Motorola mobile radio and a PC with Windows OS (XP/VISTA/Windows 7), .NET framework 2.0, Serial/USB Port Connection and Internet Connection. Remote SDS Control Feature added to the TETRA radios required to control the application. Compatible with Dimetra IP Scalable.

KEY BENEFITS

Being able to mobilise field teams and keep them informed with the most up to date information is essential in any public safety or commercial situation. This stand-alone software application allows operators to interconnect devices by reassigning radios to other talkgroups, retrieve information and location at any time and monitor contacts.

Full Control

The operator has full control over any system requiring dispatcher access of multiple radios based on geographical locations.

Works with TETRA

A miniature module connects to a TETRA radio allowing the software to access many features from the radio remotely.

Monitor Talkgroups

Dispatchers can access all of the talkgroups on each individual radio separately and add them to a list of talkgroups. By dragging and dropping radios from Google Earth maps via the software to the appropriate talkgroup, the operator can communicate with devices in this talkgroup through Push-To-Talk.

Edit Contacts

Operators can add, delete or modify any contact from a selected radio device remotely through the software and view all technical information for that device.

“AS A LEADING PROVIDER OF MISSION AND BUSINESS CRITICAL INFORMATION AND COMMUNICATION SOLUTIONS, WE HAVE THE EXPERIENCE AND EXPERTISE TO DELIVER LEVELS OF NETWORK SECURITY AND RESILIENCE THAT HAVE ONLY BEEN AVAILABLE TO LARGE GOVERNMENT CUSTOMERS”



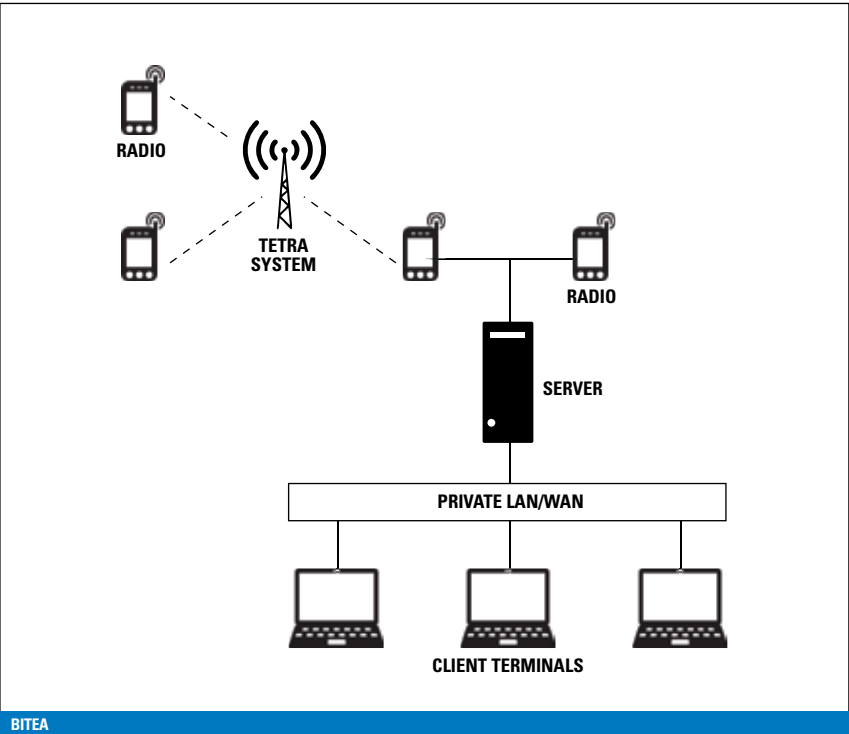
Systel
2A Shafik Mansour St. , Zamalek
Cairo - EGYPT
Yasser.Swailem@systel.com.eg
+202-27351222
+202-27355556
+202-27355252
www.systel.com.eg



GPS TRACKING OVER TETRA SOLUTION BITEA

OVERVIEW

The BiTEA NC1010 GPS Tracking over TETRA software application provides position fixing and tracking of assets using Motorola GPS enabled TETRA radios. A discrete radio to radio tracking facility for small specialist teams in surveillance, fire services and covert operations.



Target Markets
Police, Fire Brigade, Security and Rail

Geographical Scope
Worldwide

Supported Languages
English



KEY FEATURES

- Multiple input ports for asset and target tracking
- Multiple Client viewers
- Multiple simultaneous Map windows
- Client – Server Architecture
- MapPoint, Google Earth and other mapping interfaces
- Standalone or remote client server applications
- Real time display of reported GPS location data
- Autonomous and discrete operation
- Portable or fixed operation
- Easy setup with user defined icons
- Create and save predefined configurations for different jobs
- Replays log files in real time, slow or high speed
- Track multiple terminals on moving maps
- Dynamically change terminal details or team associations
- Hide active groups or terminals
- Users identified by call sign name
- Approved for use on the UK Public Safety TETRA network
- Over the air changing of terminal ISSI destination and GPS reporting rates

SYSTEM REQUIREMENTS

Designed to use data provided by GPS enabled TETRA terminals and standard NMEA083 compatible devices

Radio Requirements of BiTEA GPS Tracking systems – applicable for all GPS enabled Motorola TETRA radios.

“BiTEA IS AN AWARD-WINNING, INNOVATIVE TECHNOLOGY COMPANY SPECIALISING IN THE DESIGN AND MANUFACTURE OF SOFTWARE, HARDWARE ELECTRONICS AND SUPPORT PRODUCTS FOR TERRESTRIAL TRUNKED RADIO (TETRA) NETWORK OPERATORS AND USERS. OUR AIM IS TO OFFER PUBLIC SAFETY ORGANISATIONS COST EFFICIENT, RELIABLE EQUIPMENT AND SUPPORT”



BiTEA LIMITED
ICS House,
Hall Road,
Maldon,
Essex
CM94LA
United Kingdom
www.bitea.com



FLEET MANAGEMENT AND VEHICLE TRACKING C-TRACK

OVERVIEW

C-track’s GPS/GSM (GPRS) and RF fleet management and vehicle tracking systems provide private vehicle owners and commercial fleet operators with flexible, reliable and scalable solutions. A cost-effective service utilising advanced satellite navigation and security tools to maximise operational efficiency.

KEY BENEFITS

Efficient fleet management is essential for any company or emergency service running commercial vehicle, van and car fleets. C-track allows organisations to optimise operations through fuel savings, reduced CO² emissions and improved security.

Total Fleet Management

C-track GPS/GSM (GPRS) and RF Fleet Management systems are based on latest satellite and telecommunications technology to provide comprehensive real-time data on vehicles to fleet operators and emergency services. C-track utilises the Global Positioning System (GPS) to pinpoint vehicle location and GSM networks to transmit information in real time, 24-hours a day, all year round. Fully scaleable and remotely upgradeable for total mobile flexibility, C-track provides essential information about mobile assets and drivers so organisations can effectively manage their risk.

Vehicle Security

Monitoring and reporting vehicle movement, C-track is renowned as a highly efficient security tool and can prove a crucial link in stolen vehicle recovery. The system has a recovery rate of over 90% and using latest GPS/GSM (GPRS) and RF technology can locate a vehicle to within 4 metres.

Vehicle Tracking Equipment

C-track supply, maintain and fit a range of vehicle tracking devices to report vehicle position and data using GSM, TETRA, Satellite and WiFi. Services fully support Motorola MTM-800 dash mounted radios and TOM-100 embedded modules.

Target Markets

Fleet owners, private vehicle owners, emergency services

Geographical Scope

UK, Europe, America's, Asia, Africa, incl South Africa

Supported Languages

All languages via translation



KEY FEATURES

- Several mobile units available
- All units running Mitsubishi 16-bit and 32-bit CPU's
- Wavecom GSM modem and GPS module for accurate vehicle tracking
- Motorola TETRA Radio for safe and reliable communications
- Sectrack Inmarsat D+ Radio
- Back-up battery

SYSTEM REQUIREMENTS

Base Station software can be configured on any system from a single Pentium PC acting as a dial-up server to Multi CPU clusters with RAID disks.

Radio requirements of C-track mobile fleet management units – support for Motorola MTM-800 dash mounted radios and TOM-100 embedded modules.

“C-TRACK IS A GROUP COMPANY OF THE JSE LISTED DIGICORE HOLDINGS LIMITED AND WORKS IN PARTNERSHIP WITH ITS CUSTOMERS TO DEVELOP SOLUTIONS THAT DELIVER MEASURABLE BUSINESS AND OPERATIONAL BENEFITS BY PROVIDING TOTAL VISIBILITY AND CONTROL OF MOBILE ASSETS AND MOBILE WORK FORCES.”



Intelligent Tracking Powered by DigiCore



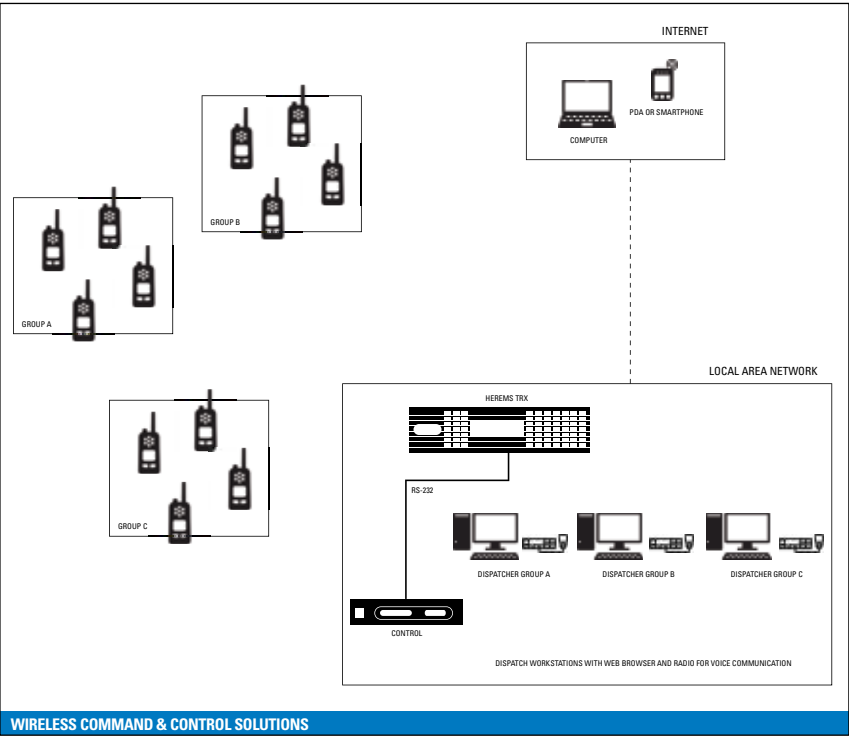
C-track
Regency Office Park
9 Regency Drive
Route 21 Corporate Park
Irene
Pretoria
South Africa
www.ctrack.com



PROFESSIONAL FLEET MANAGEMENT FOR TETRA hermesTRX

OVERVIEW

hermesTRX is a GPS tracking and dispatcher system that allows Motorola TETRA radios to be connected without drivers or additional software. It is an advanced solution equipped with features such as Email notification, integration of digital mapping platforms and direct connectivity for up to two TETRA base radios.



Target Markets
Government, Manufacturing, Transportation, Utilities, Education, Government, Taxi, Courier and Public Safety

Geographical Scope
Worldwide

Supported Languages
English, Spanish, German and French

hermesTRX
enterprise

KEY BENEFITS

Professional fleet management using GPS tracking is vital for optimising efficiency. Utilising the inherent reliability of TETRA, hermesTRX provides highly accurate location information to ensure total workforce mobility.

Plug-and-Play

hermesTRX is a reliable fleet management solution that's easy to access, configure and operate through a built in web-server.

Location Service

Real-time GPS based Location Tracking and the capability to handle up to 250 subscribers with different mapping platforms for worldwide coverage.

Geo-Fencing

Enables a dispatcher to 'ring-fence' the geographical area a subscriber (or group of subscribers) is able to travel around and warn the dispatcher if the demarcation line of the geo-fence is crossed.

Text Messaging

Convenient communications with a web-based, two-way text Messaging Service.

Reverse Geocoding

Provides the ability to take GPS coordinates and convert them into street addresses.



KEY FEATURES

- Built-in web browser for browser based operation
- Multi-user access and remote facility
- A detailed user set-up manual and example CPS files and associated firmware
- No monthly recurring investment costs and no costs associated with software or map licenses
- Built-in record and playback capability
- Flexible Mapping Engine provides the option of choosing OpenStreetMap, ESRI, MapQuest, ArcGIS, National Geographic or Google™ Earth
- Intel® Atom™ processor N2800
- Ethernet RJ45 interface and integrated RS232 interfaces
- 12V Power Supply (110/220V optional)
- A standard web browser is the only requirement for set up and use of the system
- Compatible with operating systems: Windows 7, Vista, XP, OSX, iPad and Linux
- Vesa, DIN-Rail and Wall Mount options
- Supports Motorola TETRA radios and is compatible with Dimetra IP Compact/Micro and Dimetra IP Scalable

SYSTEM REQUIREMENTS

- A standard web browser is the only requirement for set up and use of the system
 - Compatible with operating systems: Windows 7, Vista, XP, OSX, iPad and Linux
- Radio Requirements of the hermesTRX GPS tracking and dispatcher system – applicable for all Motorola TETRA radios with GPS enabled.

“WITH THE LAUNCH OF HERMESTRX ENTERPRISE, MICROCOM IS CONTINUING A SUCCESS STORY WHICH IS WITHOUT PARALLEL IN THE MOTOROLA APPLICATION SEGMENT. SINCE 2007, WHEN THE HERMESTRX WAS FIRST INTRODUCED AT THE MOTOROLA CHANNEL PARTNER CONFERENCE IN CAPE TOWN, THE MUNICH-BASED APPLICATION PARTNER HAS SOLD HERMESTRX IN MORE THAN 50 COUNTRIES.”



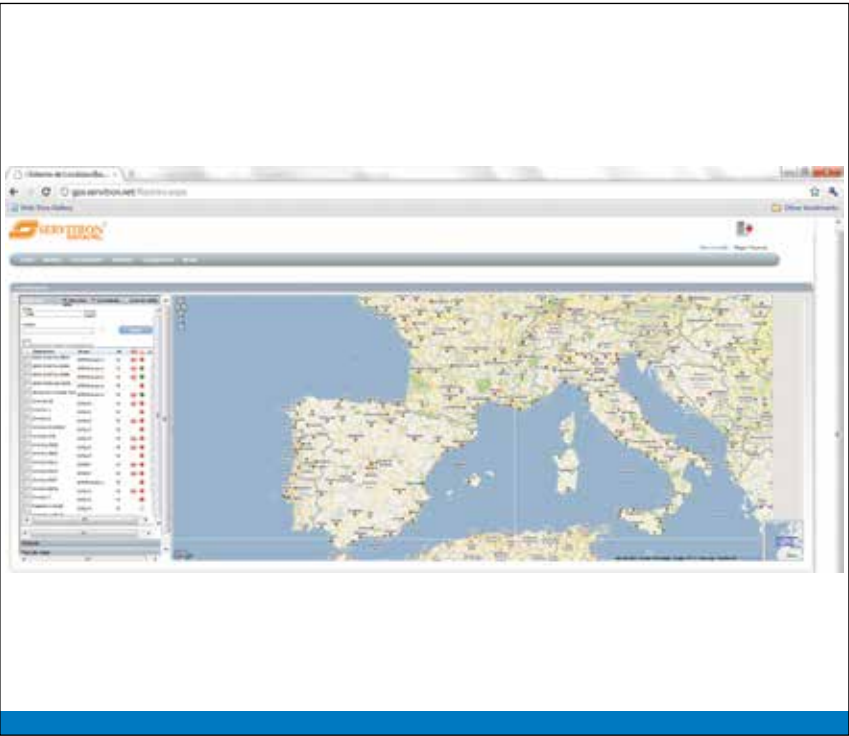
hermesTRX
hermes microcom
Gautinger Str. 26a
82061 Munich-Neuried
Germany
info@hermestrx.com
+49 89 745547 0
www.hermestrx.com

hermesTRX
enterprise

ONLINE TRACKER SOLUTION SERVITRON

OVERVIEW

Servitron Online Tracker is one of the most powerful and comprehensive TETRA asset management platforms in the industry. It is designed for Motorola TETRA radios and enables comprehensive and efficient tracking of resources.



Target Markets
Transportation, Government, Utilities and More

Geographical Scope
Latin America

Supported Languages
English and Spanish



KEY FEATURES

- Real-time and historical web based tracking
- Asset, individual and fleet management
- Vehicle maintenance schedules and reminders
- Extensive alert options and notification services
- Unparalleled geofencing functionality
- Hardened security for full data protection
- Complete and easy-to-use reports
- Hosted solution

SYSTEM REQUIREMENTS

The Servitron Online Tracker for Motorola Dimetra IP is compatible with ASP, .NET, AJAX and SQL Server 2005/2008. It supports SSL and can be easily installed on a Windows Server.

Radio Requirements of the Servitron Online Tracker – applicable for all Motorola TETRA radios with Dimetra IP 6.2 or higher system software.

“SERVITRON IS A MEXICAN BUSINESS, EFFICIENTLY FOCUSING ON THE COMMUNICATION NEEDS OF PRIVATE AND PUBLIC INSTITUTIONS. WITH OVER 15 YEARS OF EXPERIENCE, THE COMPANY IS A LEADER IN THE MEXICAN MARKET WITH HIGHLY QUALIFIED PERSONNEL IN ALL BUSINESS AREAS AND INSTALLATIONS RENOWNED FOR HIGH QUALITY AND SECURITY.”



SERVITRON
Av. Revolución 639, Piso 4
Col. San Pedro de los Pinos
México, D.F. | C.P. 03800
tel: +525554820210
email: info@servitron.net
www.servitron.net

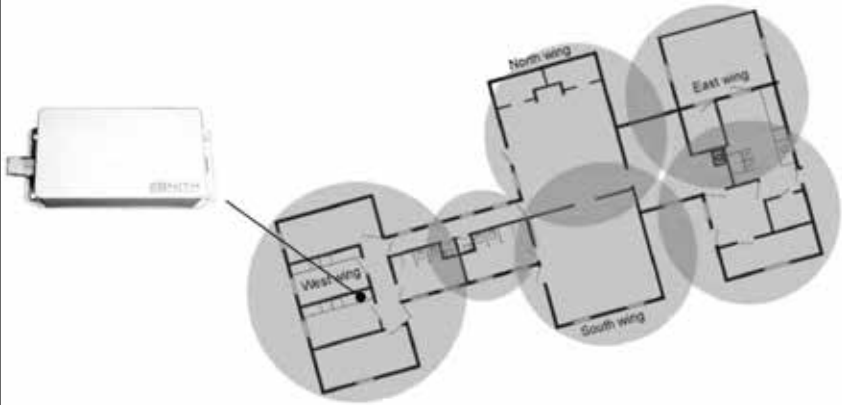


BLUETOOTH INDOOR POSITIONING SYSTEM (IPS) ZONITH

OVERVIEW

ZONITH IPS is an indoor positioning system for locating and tracking Bluetooth® devices such as TETRA radios, mobile phones, side connectors and tags. An efficient system that monitors workers for safety purposes and assets for improved efficiency.

**BLUETOOTH BEACONS CREATE ZONES.
THE ACCURACY OF THE SYSTEM IS
ADJUSTED THROUGH THE NUMBER
OF BEACONS**



KEY BENEFITS

Keeping track of personnel working alone and valuable equipment is essential for maintaining safety and performance. ZONITH IPS monitors the unique identity in each Bluetooth device as it moves from zone to zone, detecting movement using small, discretely designed ZONITH Bluetooth Positioning Beacons.

Real Time Positioning

The Beacons are connected to a LAN which offers the fastest and most efficient communication of location data. Any Bluetooth device can be tracked independently and Beacons can be tuned to cover small or large zones. This is the only solution supporting real time indoor positioning without affecting radio network performance.

Immediate Response

Each device is shown on a graphical display with the users name or role. It's easy to zoom from wide area maps to in-building floor plans to find a specific Bluetooth device. If someone has activated a lone worker alarm or panic button, the GUI immediately highlights who is in danger and where they are located.

Cost Effective

Using an existing LAN and standard Bluetooth devices requires no extra investment in unnecessary network infrastructure or expensive proprietary identity devices.

Target Markets
Public Safety, Oil & Gas, Power Utilities, Heavy Industry, Retail, Security

Geographical Scope
Europe, Asia, North America, Latin America and Australia

Supported Languages
English



KEY FEATURES

- Radio Requirements of the ZONITH Indoor Positioning System – applicable for all Bluetooth enabled TETRA radios.
- Real Time Positioning using Beacons
 - Clear Graphical User Interface with personal tracking and zoom features
 - Scalable – add more Beacons for greater accuracy
 - Beacons are available in different antenna configurations and can be tuned to cover up to 100 metres
 - Provides a backbone for System Integrators to create intelligent location based services such as emergency response, panic alerting, guard touring and lone worker
 - Supports Personal Emergency Alarming - control room staff are instantly alerted through the graphical display or by text on TETRA radios or mobile phones when a worker activates a TETRA radio emergency alarm
 - Can be used to create 'Safe Areas' - if someone leaves a 'Safe Area', IPS will automatically activate Lone Worker for safety purposes and deactivate the service when the person returns

SYSTEM REQUIREMENTS

The ZONITH IPS is entirely IP-based and only requires LAN connection and an IP Router/Switch.

“FOUNDED IN 2000 BY A GROUP OF NOKIA ENGINEERS, ZONITH A/S DEVELOPS SOFTWARE THAT MAKES LIFE EASIER FOR PROFESSIONALS WHO HAVE TO DEAL WITH ALARMS. WE SPECIALIZE IN ALARM HANDLING AND NOTIFICATION SOLUTIONS, SOLVING TASKS AT ALL LEVELS OF COMPLEXITY, RANGING FROM SIMPLE NOTIFICATION SOLUTIONS TO LARGE ALARM HANDLING SYSTEMS. ZONITH PROVIDES VALUE ADDED SOFTWARE APPLICATIONS THAT MAXIMISE THE BENEFITS OF TETRA TO IMPROVE THE SAFETY, SECURITY AND SITUATIONAL AWARENESS OF PUBLIC AND PRIVATE SECTOR EMPLOYEES.”

ZONITH A/S
Gammel Kongevej 39E
DK-1610 Copenhagen V
Denmark
www.zonith.com

ZONITH UK LTD.
Sheraton House
Cambridge CB3 0AX
United Kingdom
www.zonith.com



OFFSHORE WIND FARM PERSONNEL TRACKING SOLUTION ZONITH

OVERVIEW

ZONITH Offshore Wind Farm Personnel Tracking Solution is a Dimetra based system that monitors where maintenance and service engineers are located at all times. An essential solution that combines TETRA radios and RFID readers to ensure the safety of personnel working in difficult and often isolated environments.



Target Markets
Offshore Wind Farm Operators

Geographical Scope
Europe

Supported Languages
English



KEY FEATURES

Radio Requirements of the ZONITH Offshore Wind Farm Personnel Tracking Solution – applicable for all TETRA radios.

- Tracks personnel when boarding and disembarking a Wind Farm service vessel
- Verifies personnel locations using RFID and TETRA GPS messaging
- Ensures accurate location data using geo-fences at each wind turbine
- Interfaces directly to the MOTOROLA Dimetra short data router

SYSTEM REQUIREMENTS

Interfaces to Dimetra via a Motorola Dimetra Short Data Router interface and Mobile TETRA radio PEI interface. The solution is based on a standalone ZONITH.

“FOUNDED IN 2000 BY A GROUP OF NOKIA ENGINEERS, ZONITH DEVELOPS SOFTWARE THAT MAKES LIFE EASIER FOR PROFESSIONALS WHO HAVE TO DEAL WITH ALARMS AND STAFF SAFETY. ZONITH SPECIALIZES IN ALARM HANDLING AND NOTIFICATION SOLUTIONS, SOLVING TASKS AT ALL LEVELS OF COMPLEXITY, RANGING FROM SIMPLE NOTIFICATION SOLUTIONS TO LARGE ALARM HANDLING SYSTEMS. ZONITH PROVIDES VALUE ADDED SOFTWARE APPLICATIONS THAT MAXIMISE THE BENEFITS OF TETRA TO IMPROVE THE SAFETY, SECURITY AND SITUATIONAL AWARENESS OF PUBLIC AND PRIVATE SECTOR EMPLOYEES.”



ZONITH A/S
Gammel Kongevej 39E
DK-1610 Copenhagen V
Denmark
www.zonith.com

ZONITH UK LTD.
Sheraton House
Cambridge CB3 0AX
United Kingdom
www.zonith.com



GENWATCH3® NETVISTA PERFORMANCE MANAGEMENT SOLUTION GENESIS GROUP

OVERVIEW

The Genesis Group GenWatch3® NetVista Solution interacts with and reports on ATIA (Air Traffic interface Application) activity via TCP/IP. Live activity can be viewed anywhere using LAN, WAN or high speed VPN connections on all channels and sites for efficient network management and monitoring.

KEY BENEFITS

Reliable and accurate access to live data is essential for network operators looking to efficiently maintain their network. NetVista displays a number of indicators to show when a site may have temporary problems including audible and visual Local Site Trunking and Live BUSY alerts. Reports highlight where action needs to be taken.

Instant Reporting Saves Costs

Network operators can run reports on the specified radio and determine where the user was working and at what time. From this information a decision can be made to either dispatch an engineer or report the information back to the user with an expected resolution time and close the incident report.

Around the Clock Coverage

A continually maintained report shows levels of traffic through all sites in 12 or 24 hour segments over a user defined period. By colour coding low or zero traffic, it is very clear when a site may be affected by interference or has gone into Local Site Trunking. Useful for claiming credits when service levels fall short of contractual requirements.

Spots Unauthorised Listeners

If a radio does not make a transmission, it may not appear on reports that are run over a 12 or 24 hour period. The application identifies possible unauthorised users who never change talkgroup, never switch off, never move or fail to provide new affiliation data. GenWatch3 NetVista can produce details on these unauthorised listeners and provide assistance in identification.

Easy to Use

Very easy to monitor and manage with screens for ‘Channel Status’, ‘Activity’ displaying everything that is happening on a system in real time, ‘Group View’ showing detailed Talkgroup data and ‘System Activity Summary’, an at-a-glance view of how the Dimetra network is operating.

Target Markets
Public Safety, Police,
Ambulance, Fire, Utility
Companies

Geographical Scope
Europe, Asia, North
America, Latin America,
Australia & New Zealand

Supported Languages
English (Reports can be
presented in any language
that is supported by MS
Excel®)



KEY FEATURES

- The home for all ATIA-based reports - GenWatch3 NetVista reports are built with Microsoft Excel® and are easily customizable in hundreds of variations based on the setup screen for each report
- Channel Status - fully customisable in a multiple of configurations including font sizes, colours, panel sizes, background images, information displayed and more
- Activity Screen - displays everything that is happening on a system, the instant it happens, with the ability to filter and colour code ATIA data and pause/resume action in real time
- Group View - displays the radio ID, Alias, Date and Time of the last call, a special location field (not GPS) and a tag that identifies a radio in a special way; the All Activity window shows PTT activity in time order for all Talkgroup windows that are open
- System Activity Summary – helps operators see what is happening at a glance on a screen that quickly shows the most important system statistics from a wide range of historical time windows.

SYSTEM REQUIREMENTS

Requires a LAN connection to the ATIA output from the zone controller and requires the ATIA output to be licensed and available. It is designed and tested for Dimetra IP, Dimetra IP Micro and Dimetra IP Compact.

Radio Requirements of the Genesis Group GenWatch3 NetVista Solution – No specific TETRA radio requirements.

“THROUGH OUR STATE-OF-THE-ART SOFTWARE, WE PROVIDE THE TOOLS TO MAXIMISE THE CAPABILITIES OF COMMUNICATION SYSTEMS. FLEXIBLE, MULTI-FEATURED AND MODULAR, GENESIS SOLUTIONS ARE THE INDUSTRY STANDARD IN PERFORMANCE MANAGEMENT SOFTWARE. THEY ARE THE MOST EFFECTIVE WAY TO COMPREHENSIVELY MONITOR, MANAGE, DISPLAY, ARCHIVE AND REPORT ON COMMUNICATION SYSTEM DATA”.



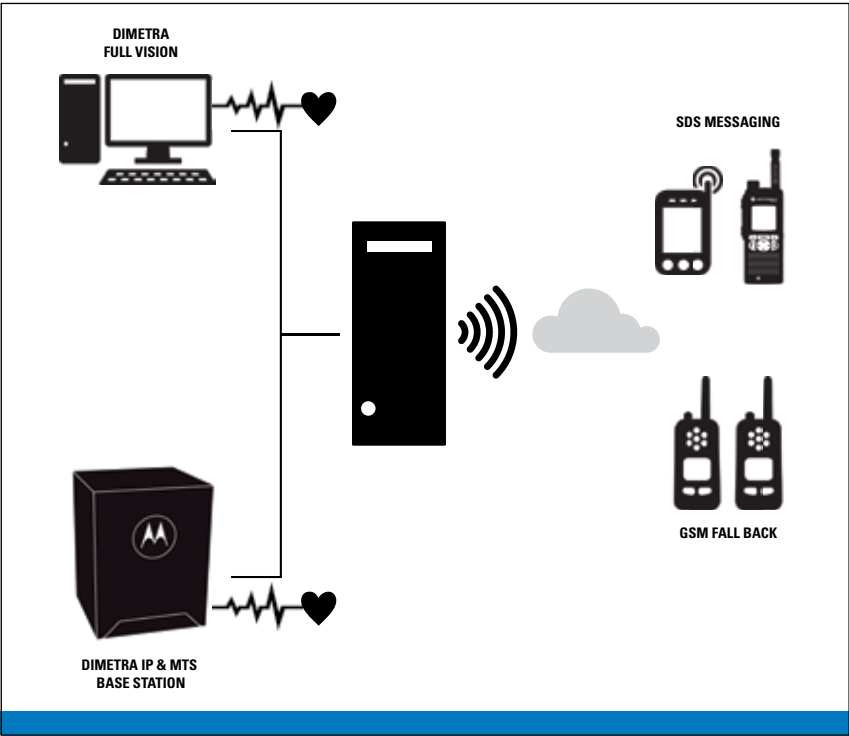
GENESIS.
601 Shelley Drive, Suite 202
Tyler, Texas, 75701
www.genesisworld.com



DIMETRA FULL VISION SYSTEM ALIVE CHECKER ZONITH

OVERVIEW

ZONITH Full Vision System Alive Checker is a Dimetra compatible software package that monitors both the Full Vision Network Monitoring system and Dimetra base station. An efficient alarm control system that ensures the network is always fully operational for maximum effectiveness.



Target Markets
Offshore Oil & Gas and Petrochemical industry

Geographical Scope
Europe, Asia, Latin America, Australia, Canada and Greenland

Supported Languages
English



KEY FEATURES

Radio Requirements of the Dimetra Full Vision System Alive Checker – applicable for all TETRA radios with display.

- Instant notification from FullVision to the network administrator on duty
- Quick response to network faults
- Notifications and escalations based on ZONITH Watch Scheduler
- Communication via TETRA or GSM messaging
- Alarm notification escalates to GSM if there is a failure in the Dimetra network or if the maintenance staff is out of TETRA coverage
- Preventive maintenance alerts from FullVision are communicated to maintenance staff before the fault actually appears
- Early response from 1st, 2nd and 3rd line support as they can be notified via SMS or Email
- Safe solution as the communication between FullVision and the Alarm Control System is monitored via “heart beats”

SYSTEM REQUIREMENTS

Interfaces to Dimetra via a Direct Short Data Router interface and Mobile TETRA radio PEI interface. The solution is entirely Windows based and requires a Windows Server and interfacing hardware.

“FOUNDED IN 2000 BY A GROUP OF NOKIA ENGINEERS, ZONITH DEVELOPS SOFTWARE THAT MAKES LIFE EASIER FOR PROFESSIONALS WHO HAVE TO DEAL WITH ALARMS AND STAFF SAFETY. ZONITH SPECIALIZES IN ALARM HANDLING AND NOTIFICATION SOLUTIONS, SOLVING TASKS AT ALL LEVELS OF COMPLEXITY, RANGING FROM SIMPLE NOTIFICATION SOLUTIONS TO LARGE ALARM HANDLING SYSTEMS. ZONITH PROVIDES VALUE ADDED SOFTWARE APPLICATIONS THAT MAXIMISE THE BENEFITS OF TETRA TO IMPROVE THE SAFETY, SECURITY AND SITUATIONAL AWARENESS OF PUBLIC AND PRIVATE SECTOR EMPLOYEES.”

ZONITH A/S
Gammel Kongevej 39E
DK-1610 Copenhagen V
Denmark
www.zonith.com

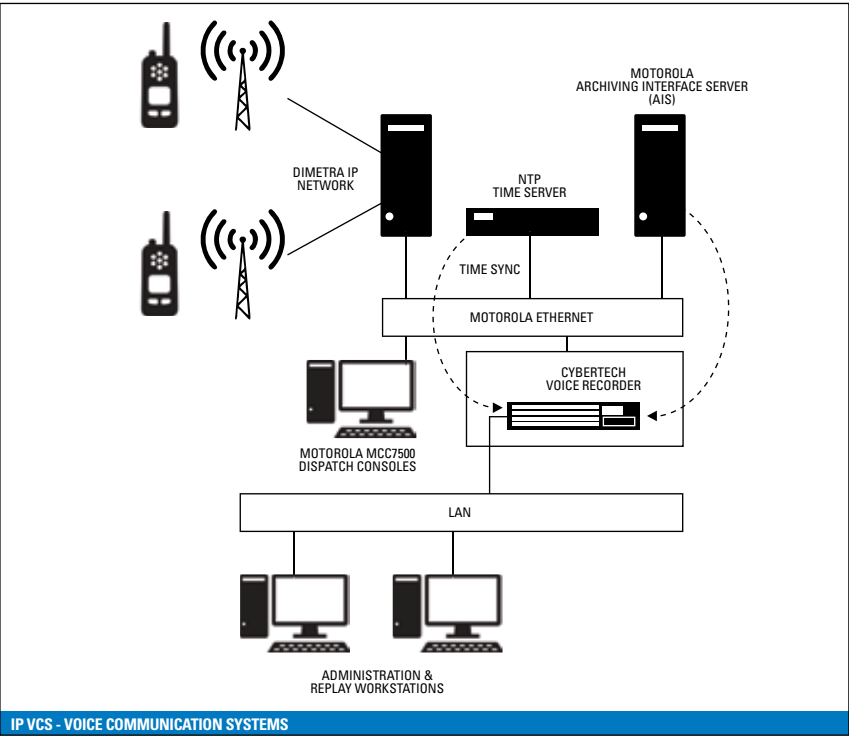
ZONITH UK LTD.
Sheraton House
Cambridge CB3 0AX
United Kingdom
www.zonith.com



DIMETRA IP VOICE RECORDING SOLUTION MOTOROLA WITH CYBERTECH

OVERVIEW

Provided as part of a Motorola Dimetra system, CyberTech Voice Recording systems record group, private and telephone interconnect calls and associated call details. A dedicated data recording solution for control centres that is comprehensive, accurate and tamper-proof.



IP VCS - VOICE COMMUNICATION SYSTEMS

Target Markets
Police, Fire, Ambulance, Government, Industry, Transport and Utility

Geographical Scope
Europe, Asia, Latin America and North America

Supported Languages
English, German, French, Dutch, Italian, Spanish, Portuguese, Japanese, Korean, Chinese (simplified & traditional), other languages available at customers request



KEY FEATURES

- Supports the Motorola MCC7500 'Archiving Interface Server' (AIS) voice logging interface
- AIS supports recording of group calls (Dimetra R6.1, R6.2, R7.0, R7.1) and individual calls (Dimetra R6.2,R7.0, 7.1)
- Maximum of 120 concurrent calls can be recorded (group + individual)
- 256 group targets can be monitored per AIS
- 1000 (Dimetra R6.2, R7.0) or 3000 (Dimetra R7.1) radio targets can be monitored per AIS
- Critical resources (groups / radios) given priority over non critical (normal) resources during busy periods
- Recording of End-to-End encryption (E2EE) supported.
- Secure replay of E2EE calls using integration with the Motorola CryptR, Key Management Facility (KMF) and Audio Processing Entity (APE)

SYSTEM REQUIREMENTS

Requires LAN connection to Motorola Archiving Interface Server (AIS).
Supported on Dimetra IP and Dimetra IP Micro systems. No specific radio requirements.
Radio Requirements of CyberTech Voice Recording systems – applicable for all Motorola TETRA radios

“CYBERTECH INTERNATIONAL LEADS THE VOICE LOGGING AND COMMUNICATIONS RECORDING INDUSTRY AND IS A RECOGNISED INNOVATOR OF VOICE RECORDING AND QUALITY MONITORING APPLICATIONS. CYBERTECH OFFERS A FULLY TESTED INTEGRATION WITH THE MOTOROLA DIMETRA R5, R6 & R7 SYSTEMS.”

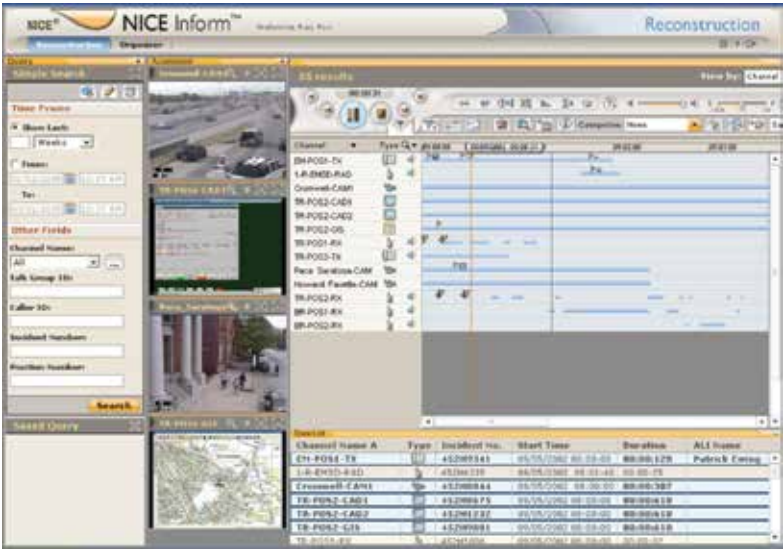
Contact your local Motorola representative for further details.



TRUNKED RADIO AND INCIDENT INFORMATION MANAGEMENT MOTOROLA WITH NICE SYSTEMS

OVERVIEW

The MCC 7500 IP Logging Recorder and Archiving Interface Server provided by Motorola in partnership with Nice Systems offers a mission-critical IP-based digital logging solution for Dimetra System Release 6.x and 7.x and Dimetra IP Compact trunked radio systems. A fully integrated and certified IP radio recording and replay service for first responders and control centres.



NICE SYSTEMS

- Target Markets**
First Responders in Police, Fire Brigade and Emergency Services plus Rail and Control Centres
- Geographical Scope**
Europe, Asia and Latin America
- Supported Languages**
English, French, German, Spanish and simplified Chinese



KEY FEATURES

- Monitors and verifies communications and interactions
- Captures any source of information including telephony, radio, video, screen, radar and VoIP
- Records and stores all multimedia inputs while appending relevant additional electronic content such as pictures, reports, texts and faxes in one place
- Advanced search parameters for all multimedia inputs - reviewers and investigators can locate an incident and associated data with pinpoint accuracy, saving time and resources
- Reconstructs a 360°real-time view and consolidates multimedia in a single view, exactly as it happened
- Organises specific and relevant incident and event information by Incident Folder, allowing instant and secure web-based access for authorised users
- Flexible, rapid and secure information sharing by DVD or email
- NICE Inform™ Media Player encrypts, authenticates, reviews and replays incident information offline or by external officials

SYSTEM REQUIREMENTS

- Supports Motorola MCC 7500 IP Consoles and Motorola Archiving Interface Server (AIS)
- Support for Dimetra IP and Dimetra IP Compact systems.

Radio Requirements of NICE Trunked Radio and General Audio Recording and Incident Information Management Solutions – all Motorola TETRA compliant radios.

“NICE SECURITY SOLUTIONS EMPOWER ORGANISATIONS TO ACT EFFECTIVELY IN REAL TIME TO PREVENT, MANAGE AND INVESTIGATE INCIDENTS, ENSURING FAST RESOLUTION AND DEBRIEFING, AND CONTINUOUS SECURITY IMPROVEMENTS.”

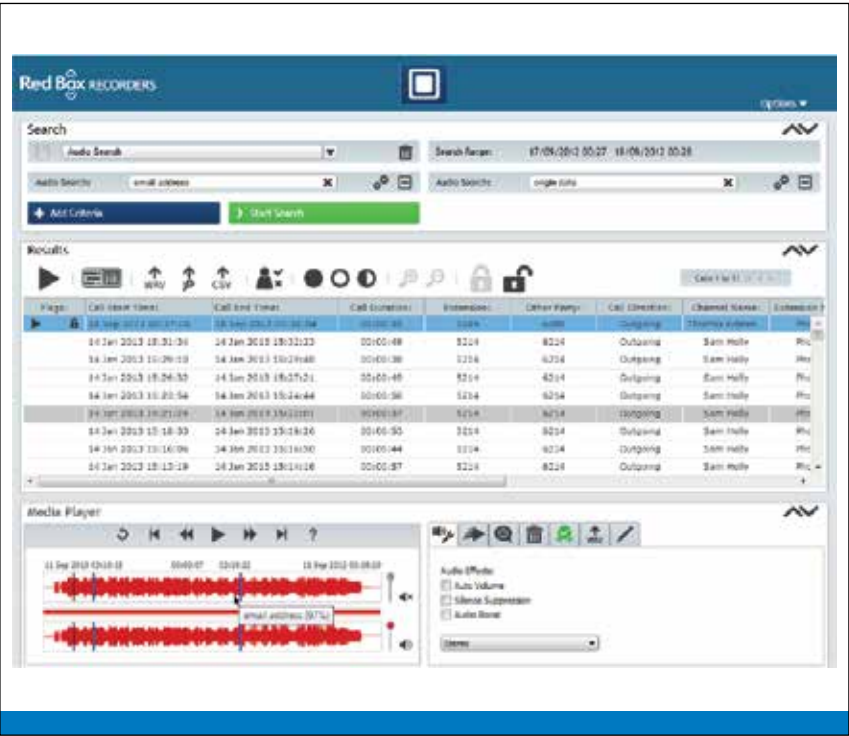
Contact your local Motorola representative for further details.



QUANTIFY RECORDING SUITE RED BOX

OVERVIEW

Red Box's Quantify Recording Suite is a flexible, scalable and easy to deploy solution that enables communications data from a mixture of telephony types to be captured, archived retrieved and analysed. It is fully compatible with Motorola's Dimetra IP system for hassle-free integration.



Target Markets
Public Safety, Public Sector, Transportation

Geographical Scope
Europe, Asia, North America and Latin America

Supported Languages
English, French, Spanish and Portuguese



KEY FEATURES

- Fully compliant with the Motorola Dimetra IP system
- Records audio transmission, Talkgroup, ISSI (Radio ID, Radio Alias), Start Time, End Time and Call Duration
- Full search and replay functions
- Easy to setup and use with web-based interface – no specialist knowledge required
- Efficient workflow for simple and effective use of time
- Phonetic Search for quick and accurate audio retrieval

SYSTEM REQUIREMENTS

The Quantify Recording Suite for Dimetra is entirely IP-based and only requires IP connectivity to the Motorola AIS server. A list of all required Talkgroups and ISSIs to be recorded needs to be provided so that the recorder can register an interest in them with the AIS. The recorder should be licensed for Motorola recording.

Radio Requirements of the Red Box Quantify Digital Voice Recording Solution – applicable for all Motorola radios via the Archiving Interface Server (AIS).

Compatible with Dimetra IP Compact on System Release 7.0 and 8.0.

“RED BOX RECORDERS IS A GLOBAL PROVIDER OF VOICE AND DATA RECORDING SOLUTIONS THAT SOLVE TECHNICAL AND COMPLEX BUSINESS CHALLENGES IN THE SMARTEST AND MOST EFFECTIVE WAY POSSIBLE. THE COMPANY’S ADVANCED AND PROVEN SOLUTIONS ENABLE THE CAPTURE, AUTHENTICATION, ANALYSIS AND EVALUATION OF MULTIMEDIA COMMUNICATIONS, FROM A WIDE RANGE OF DATA SOURCES INCLUDING FIXED-LINE AND MOBILE CALLS, RADIO, SCREEN RECORDINGS AND SMS.

RED BOX SOLUTIONS CAN BE FOUND THROUGHOUT THE WORLD AND ARE SUPPORTED BY ITS ESTABLISHED GLOBAL INFRASTRUCTURE AND A NETWORK OF OVER 300 PARTNERS TO DELIVER THE HIGHEST LEVELS OF QUALITY, SERVICE AND SUPPORT.”



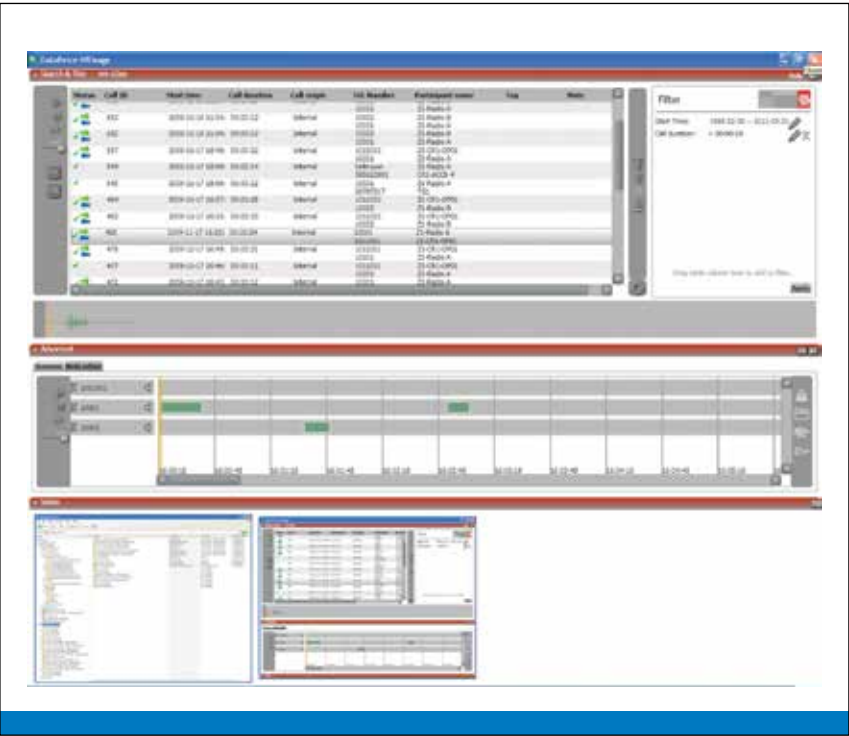
RED BOX RECORDERS LTD
Bradmore Business Park
Loughbrough Road
Bradmore
Nottingham NG11 6QA
United Kingdom
info@redboxrecorders.com
+44 (0)115 937 7100
www.redboxrecorders.com

**RED BOX
RECORDERS**

FULLY INTEGRATED DATAVOICE COMPLIANCE RECORDING SOLUTIONS SPESCOM

OVERVIEW

The Spescom DataVoice Compliance Recording Solution for Dimetra allows reliable and resilient recording for mission-critical TETRA applications. A high performance system, it provides all the tools required to assist with rapid response and incident reconstruction.



Target Markets
Police, Fire, Rail, Defence, Utilities, Emergency Services

Geographical Scope
EMEA and Latin America

Supported Languages
Multi-language support - English, German, French, Italian and Arabic



KEY BENEFITS

Reliable data and voice recording is vital for monitoring incidents and providing accurate reporting. Integrating with the Motorola AIS server, Spescom DataVoice seamlessly records all communication channels into one enterprise recording system to provide legally admissible records and incident logs.

Multiple Channel Recording

Integrates with and records all channels including radios, end-to-end-encrypted (E2EE) TETRA radios, analogue phones, digital phones and primary rate telephony trunks.

Total Flexibility

Spescom DataVoice records talk groups as well as Private and Interconnect calls and caters for multi-zone and roaming implementations of Dimetra R7.1.

Integrates with Full DataVoice suite

Including central access to enterprise-wide communication recording, operator workstation screen recording, operator performance evaluation and convergence of traditional telephony, IP telephony and radio communication recording in one system.

Easy to use

A choice of feature-packed user interfaces, each designed with ease of use, minimal training time and superior functionality in mind.



KEY FEATURES

- Supports mixed recording of analogue lines, digital lines, proprietary digital lines, primary rate E1 trunks or radios on a single platform
- Fully supports the Dimetra critical resource feature and recording or playback of Dimetra End-to-End-Encrypted (E2EE) radio channels
- Captures rich radio network call information from the AIS interface
- Single recorder can connect to multiple AIS servers for effective resource utilisation
- Multiple recorders and recordings in different geographical locations can be viewed, managed and stored in a central unified database
- System can handle very high TETRA traffic or short PTT (Press To Talk) TETRA radio bursts in real-time
- Enforces security down to the "Radio ID" or user level within a talk group
- System access is via secure, encrypted HTTPS connections
- Records TETRA audio in its native ACELP format to preserve quality and reduce storage requirements
- Allows for the grouping of successive PTT segments for the same talk group into a single recording to simplify search and playback
- Each PTT segment can be configured separately so all audio for a specific operator can be singled out, even if the operator was part of multiple talk groups

SYSTEM REQUIREMENTS

The DataVoice Compliance Recording Solution for Dimetra is entirely IP-based and only requires IP connectivity to the Motorola AIS server.

Radio Requirements of the Spescom DataVoice Compliance Recording system – applicable for all radios or consoles compatible with a supported Motorola Dimetra version.

"SPESCOM DATAVOICE DESIGNS AND DEVELOPS PROPRIETARY SOLUTIONS THAT RECORD, MANAGE, RE-CREATE AND ANALYSE VOICE AND SCREEN TRANSACTIONS. WE ALSO OFFER COMPREHENSIVE PERFORMANCE MANAGEMENT SOLUTIONS, CUSTOMER QUALITY ASSURANCE RESEARCH AND OTHER PROFESSIONAL SERVICES. OUR SOLUTIONS ARE TAILORED TO ENHANCE COMMUNICATION BETWEEN ORGANISATIONS AND THEIR CUSTOMERS AND SUPPORT BUSINESS PROCESSES, ASSISTING THEM TO MEET SECURITY, LEGAL AND GOVERNANCE REQUIREMENTS, MITIGATE RISK, OPTIMISE WORKFORCE PRODUCTIVITY AND ENSURE QUALITY CUSTOMER INTERACTIONS."



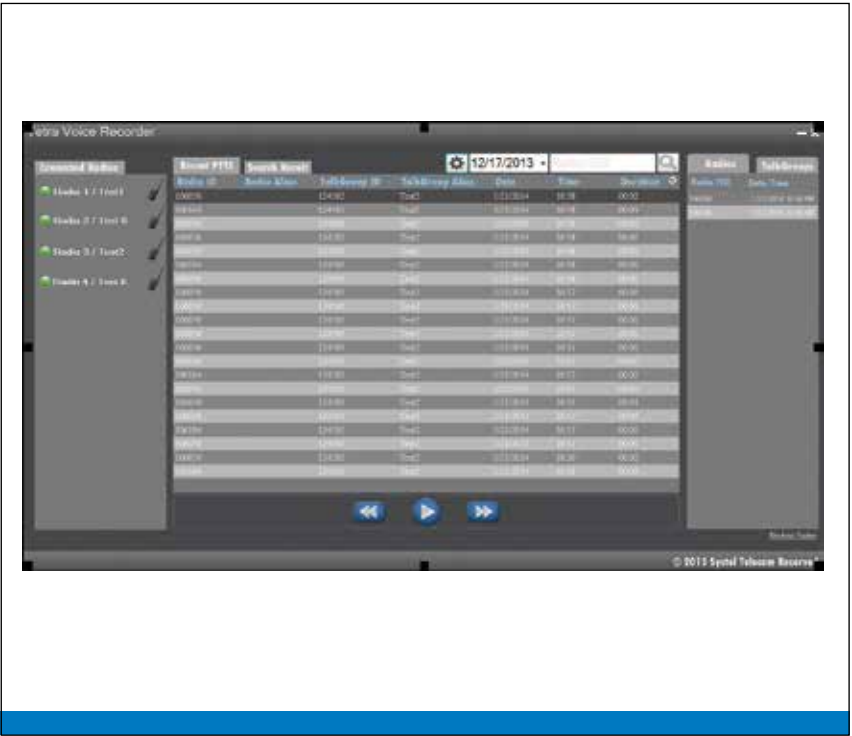
SPESCOM
Spescom DataVoice
Spescom Park, Cnr. Alexandra
Avenue & Second Road,
Halfway House, Midrand, 1685
PO Box 288, Halfway House, 1685,
South Africa
www.spescom.com



TETRA VOICE LOGGER AND ARCHIVING SYSTEM SYSTEL

OVERVIEW

Systel TETRA Voice Logger is a compact, reliable and entirely self-contained system for recording, archiving, searching and replaying radio communications. An effective way of logging and organising important information.



Target Markets
Public Safety and Private Companies

Geographical Scope
Europe, MEA

Supported Languages
English and Arabic



KEY FEATURES

Field Radio Requirements of Systel TETRA Voice Logger – applicable for all Motorola TETRA radios.

Control Room Radio Requirements of Systel TETRA Voice Logger – applicable for Motorola MTM800E TETRA radio - dedicated for each talkgroup to be recorded.

- Stand alone system with no direct connection required to the Dimetra system
- Efficient message recording and management with recording triggered by message activation - each message is saved in a separate (.wav) file which is playable on most operating systems and indexed with calling radio ID, talkgroup, message duration, message time and date
- Powerful message filtering and search tools enable user to filter messages by talkgroup (single or range), talkgroup alias (if assigned), radio ID (single or range), radio alias (if assigned), message duration, message time and date.
- Recording is message activated so recording starts with the message setup signaling and stops with the message terminate signaling
- Supports both Trunk and Direct modes

Requires TETRA network coverage (for trunk mode).
Compatible with Dimetra IP Scalable.

SYSTEM REQUIREMENTS

“AS A LEADING PROVIDER OF MISSION AND BUSINESS CRITICAL INFORMATION AND COMMUNICATION SOLUTIONS, WE HAVE THE EXPERIENCE AND EXPERTISE TO DELIVER LEVELS OF NETWORK SECURITY AND RESILIENCE THAT HAVE ONLY BEEN AVAILABLE TO LARGE GOVERNMENT CUSTOMERS”



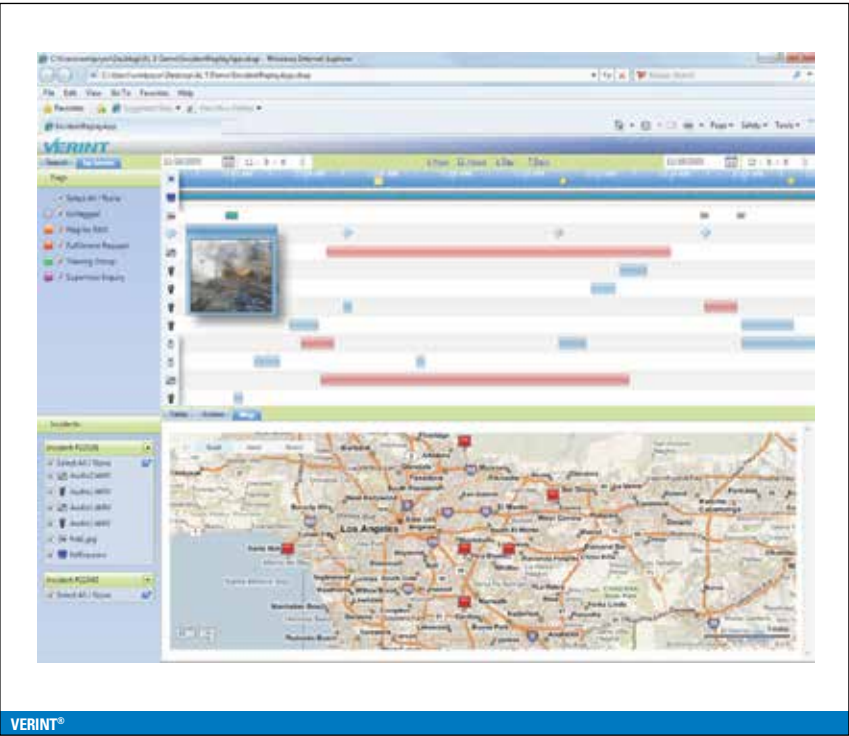
Systel
2A Shafik Mansour St. , Zamalek
Cairo - EGYPT
Yasser.Swailem@systel.com.eg
+202-27351222
+202-27355556
+202-27355252
www.systel.com.eg



AUDIOLOG™ FOR PUBLIC SAFETY VERINT®

OVERVIEW

Verint® Audiolog™ is an advanced digital recording, evaluation and archiving solution that captures interactions from multiple information sources. Audiolog is designed to help first responders, public safety organisations and control rooms perform more effectively with maximum compliance and minimum risk.



VERINT®

Target Markets
Public Safety Answering Points and Command and Control Centres

Geographical Scope
Europe, Asia and Latin America

Supported Languages
English, Spanish, Italian, German, Japanese and Simplified Chinese



KEY BENEFITS

Up-to-the-minute information is critical for public safety organisations and command and control centres. Based on the Motorola DIMETRA R6.2 TETRA infrastructure, Audiolog provides reliable digital recording, playback and archiving with multichannel event reconstruction and full search capabilities. Audiolog offers first responders a dedicated solution for faster decision making and improved performance.

Faster Investigations

Audiolog provides full-time, on-demand, scheduled and criteria-driven recording with rapid access to recordings to help speed up investigations and reduce liability.

Multiple Information Sources

Audiolog captures relevant information from traditional, wireless, radio and IP calls including photos, text/SMS messaging, videos, TTY and more.

Flexible Storage

With flexible storage capabilities, Audiolog allows large volumes of calls to be retained using industry-standard technologies.



KEY
FEATURES

- Certified by Motorola for Dimetra R6.2 TETRA Infrastructure
- Records talkgroup, telephone interconnects, half duplex and full duplex private calls
- Searches for calls by talkgroup, radio ID, primary alias, call type, date and time
- Provides multichannel event reconstruction and playback with date/time
- Makes over 100,000 hours of recordings available online (ACLEP format)
- Provides live monitoring of talkgroups
- Archives voice transmissions and associated data to the same removable media or NAS

SYSTEM
REQUIREMENTS

Interface Specifications

- Tightly integrated for optimum performance
- Ethernet interface to Motorola Archiving Interface Server
- Supports up to 100 or more concurrent recording channels
- State-of-the-art IP-based recording

Server Specifications

- Microsoft Windows Server 2008 R2 64-bit
- Microsoft SQL Server 2008
- 4U rack-mount chassis
- Intel Xeon Quad-core CPU
- 4 GB memory
- High reliability server-grade RAID controlled hard disk drives
- Dual gigabit Ethernet
- Redundant power supplies

Radio Requirements of Verint Audiolog – Motorola Dimetra R6.2 TETRA trunked radio infrastructure using an IP interface to connect to the Motorola Archiving Interface Server (AIS) for requesting RTP streams of all radio communications.

“VERINT SYSTEMS IS A GLOBAL LEADER IN ACTIONABLE INTELLIGENCE® SOLUTIONS AND VALUE-ADDED SERVICES. OUR SOLUTIONS ENABLE ORGANISATIONS OF ALL SIZES TO MAKE TIMELY AND EFFECTIVE DECISIONS TO IMPROVE ENTERPRISE PERFORMANCE AND MAKE THE WORLD A SAFER PLACE.”



Verint Systems
info@verint.com
+1 631-962-9600

330 South Service Road
Melville, NY 11747 USA
www.verint.com



ADEO EMO MOBILE OFFICE SOLUTION EUROCOM

OVERVIEW

The ADEO EMO and EMOplus automotive PC applications developed by Eurocom are complete mobile office solutions for efficient vehicle management. Reliable systems that include on board camera, SDS Manager and navigator functions.



ADEO EMO MOBILE OFFICE SOLUTION

- Target Markets**
Police, Ambulance, Security Services, Escort Services, Fire Brigade and Army
- Geographical Scope**
Europe, Asia, Latin America and North America
- Supported Languages**
English and Italian



KEY FEATURES

- Automotive environment hardware featuring fan-less CPU, solid-state HD, 12V sequential power supply and anti-vibration mounts system
- Up to 3 on-board cameras
- GPS Navigator
- Positioning device
- UMTS or TETRA connection
- Password protection
- Optional equipment includes FM radio, rear view camera, Skype® phone with customisable contact list, web browser, I/O relay output board, wearable wireless microphones and Office Documents Manager
- EMOplus allows exchange of chained SMS messages using different technologies such as TETRA, GPRS or DMR plus exchange of data in point-to-point and transparent mode or point-to-point topology
- EMOplus features store and forward functionality, extended touch screen keyboard or silicon flexible keyboard and database queries

SYSTEM REQUIREMENTS

Supports TETRA and GPRS/3GMAN networks or any up-to-date technology installed on emergency vehicles. EMO is designed for use in automotive environments that conform with the 95/54/CE Directive. EMOplus transmits data across a variety of radio technologies including DMR, TETRA, Wi-Fi, GSM/GPRS and HSDPA.

Radio Requirements of Eurocom ADEO EMO software – applicable for all Motorola TETRA radios

“OUR MISSION IS TO KEEP A HIGH LEVEL OF CUSTOMER SATISFACTION THROUGH CONTINUOUS INNOVATION AND TECHNOLOGICAL IMPROVEMENT, ALLOWING COMMUNICATION EVERYWHERE.”



**Eurocom
Telecomunicazioni Srl**
Riccione – Bologna – Roma
Viale Carpegna, 9 -
Riccione 47838 (RN)
Italy
www.eurocomtel.com



TETRA AND 3G ENABLED MULTIBEARER COMPUTERS TETRATAB

OVERVIEW

TETRAtab multibearer computers enable data applications to be used on a TETRA or 3G network. This secure mobile data solution provides an up-to-date mobile platform for public safety services to achieve swift and accurate data transfer in a sensitive environment.



TETRATAB

- Target Markets**
Fire, Police, Ambulance, Telemetry and Private TETRA Networks
- Geographical Scope**
EMEA
- Supported Languages**
All languages supported by Microsoft Windows



KEY FEATURES

- Utilises TETRA/3G networks for total security and efficiency
- T Series – 7” TETRA/3G handheld computer tablet with car docking
- R Series – 10” rugged TETRA/3G computer tablet with car docking
- U Series – USB TETRA Modem for use anywhere
- M Series – Low power TETRA Telemetry PC with car fixing capability

SYSTEM REQUIREMENTS

- All devices use Motorola TOM 100 TETRA Radio Modem
- Devices conform to TETRA standards in the 380-430 Mhz bands
- Clients must hold TEA licence to be able to handle encrypted product

Radio Requirements of TETRAtab Solutions – all devices use the Motorola TOM 100 TETRA Radio Modem.

“TETRATAB OFFERS A SECURE, LIGHTWEIGHT, COMPACT YET FEATURE RICH SOLUTION TO THE MOBILE DATA CHALLENGE IN THE PUBLIC SAFETY ENVIRONMENT. THE COMBINATION OF POWERFUL BRANDED TECHNOLOGY AND THE INGENUITY OF THE TETRATAB TEAM HAS RESULTED IN A MARKET LEADING PACKAGE.”



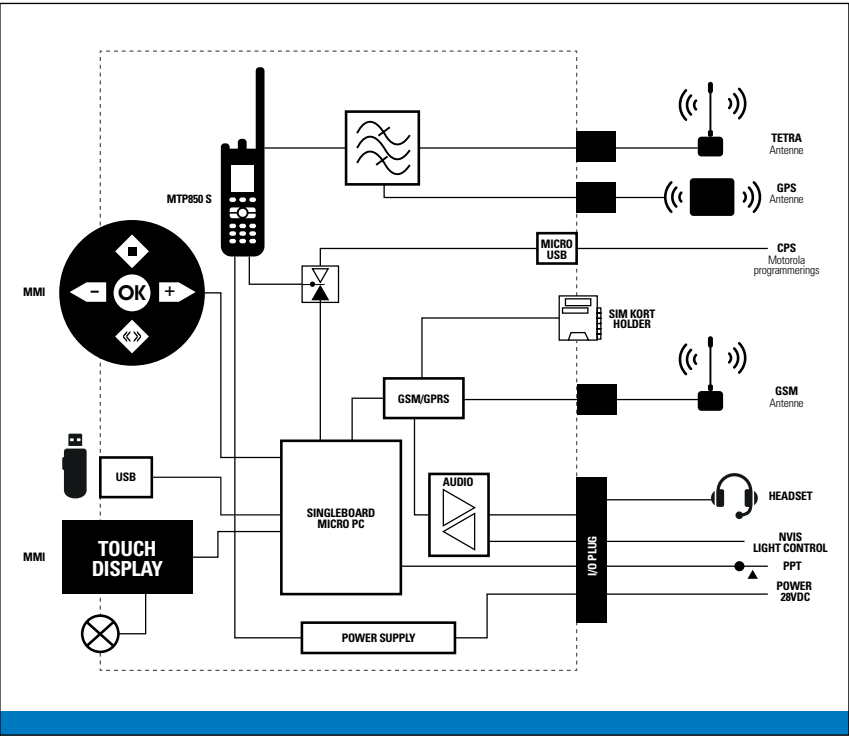
TETRAtab Ltd
Bike House Technology Centre
Bike House
Shaftesbury Road
Henstridge
BA8 0PT
UK
www.tetratab.com



ZENICOPTER ZENITEL

OVERVIEW

ZeniCopter is an easy-to-use interoperable communications platform for helicopter pilots integrating TETRA and telephony calls.



Target Markets
Rescue, Police and Military

Geographical Scope
Worldwide

Supported Languages
English



KEY FEATURES

- Motorola MTP850S radio
- A custom designed ZeniCopter PCB-board
- HM20 micro PC board running Windows CE
- HC25 GSM module.
- The User Interface consists of the primary MMI and a touch screen display
- Separate GPRS antenna input
- Built-in GSM telephone
- NCIS compatible display and MMI for night vision use
- Standard helicopter plug-in module size

Supported on Dimetra IP Scalable, Dimetra IP Compact and Dimetra IP Micro

SYSTEM REQUIREMENTS

KEY BENEFITS

Communication between air and ground personnel is vital in emergency situations. By integrating TETRA technology with the helicopter's intercom system, ZeniCopter ensures efficient communication through its touch screen display and helmet-installed headsets and microphones.

Versatile Connection

Offers robust protection against night goggle interference, vibrations and g-forces.

Easy to Use

Multiple communications are integrated, using the MTP850S for TETRA communications for group call, individual call or short-data messages; and the HC25 GSM module for telephony calls.

Flexible design

ZeniCopter is fitted in standard DIN-based spacing generally used in helicopter dashboards and therefore making it suitable for a range of applications.

“THE CORE OF OUR BUSINESS IS TO PROVIDE ONBOARD COMMUNICATION SYSTEMS FOR SHIPS; AND ANALOGUE AND DIGITAL (VOIP), STATE-OF-THE-ART INTERCOM SOLUTIONS ON SHORE. WE OPERATE WITH GLOBAL SCOPE AND ARE SUPPORTED BY A VAST NUMBER OF COUNTRY OFFICES, LOCAL DEALERS AND RESELLERS.”



ZENITEL DENMARK A/S
Park Allé 350 A, 2605 Brøndby
Telephone: +45 4343 7411
Fax: +45 4343 7522
Email: info.denmark@zenitel.com
www.zenitel.com

